

Asgard3 Guide



Mike

A guide on how to use Asgard3 and its features.

3 / 3 / 2 0 2 3

Updated as of Build 4240

Table of Contents

Versions.....	2
Asgard3-GUI – Asgard3.exe	2
Windows Screenshot – Windows 7 x64.....	2
Linux Screenshot – Cent OS 5.8 Final.....	3
Asgard3-CLI – Asgard3-CLI.exe.....	3
Windows Screenshot – Windows 7 x64.....	4
Linux Screenshot - Cent OS 5.8 Final.....	4
System Requirements	4
Asgard3 GUI – Minimal Requirements.....	4
Asgard3 CLI – Minimal Requirements.....	4
Asgard3-GUI and Asgard3-CLI Recommended Requirements.....	5
Supported Operating Systems	5
Installation	5
Windows Installation	5
Linux Installation.....	11
Linux Download.....	11
Useful Links:	11
Usage.....	11
Beginner Walkthrough.....	11
Asgard3-GUI - Walkthrough.....	12
Asgard3-CLI - Walkthrough - Easy.....	22
Asgard3-CLI - Walkthrough – Advanced	23
Core Commands.....	29
Asgard3-CLI – Core Commands.....	29
Asgard3-GUI Commands.....	29
Universal Commands	29
Flags	30
Official Plugins.....	31
Asgard Queue Sharing Plugin.....	31
Operator Plugin.....	32

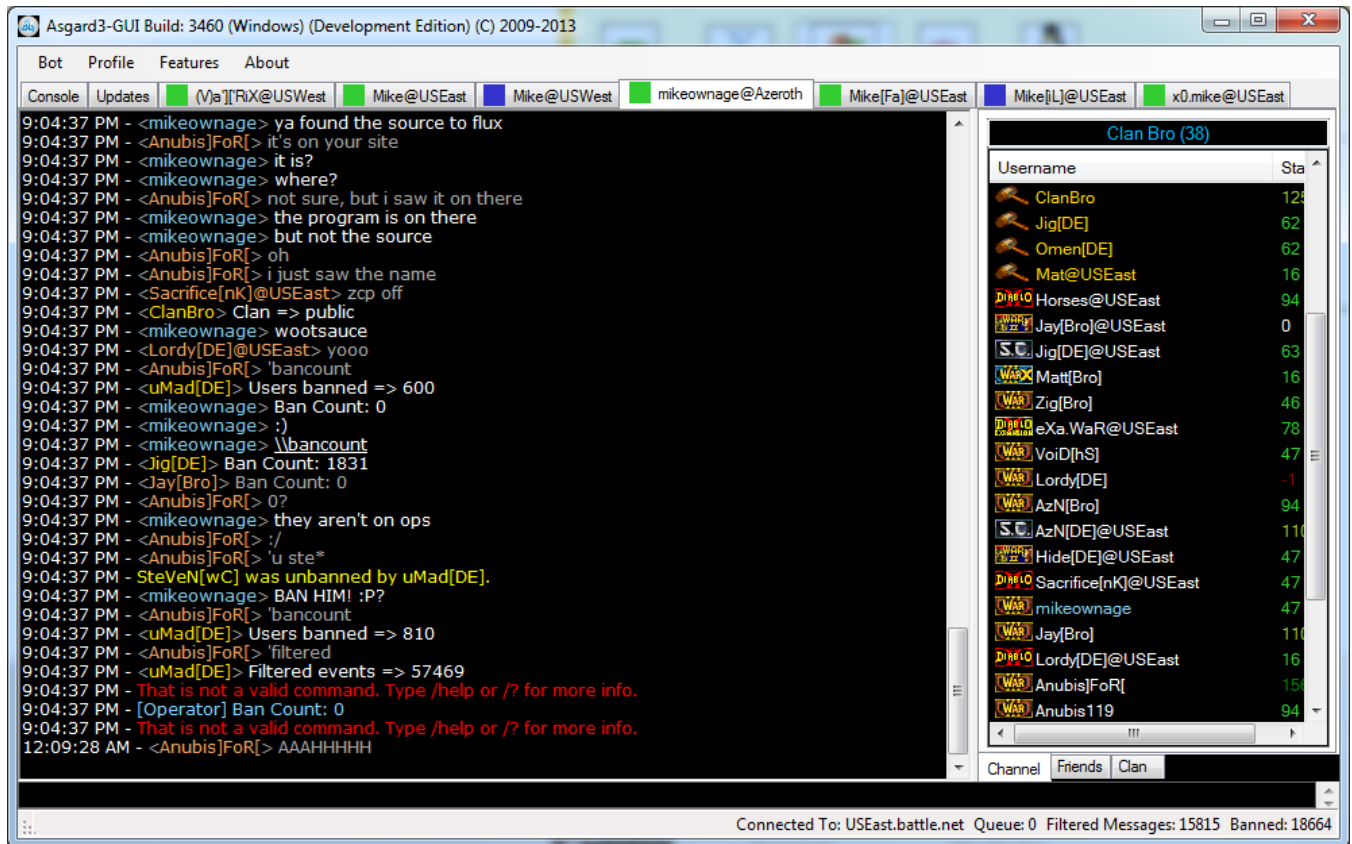
<http://www.mikeownage.com>

Versions

Asgard3-GUI – Asgard3.exe

Asgard3 GUI has a graphic user interface refer to the screenshots below.

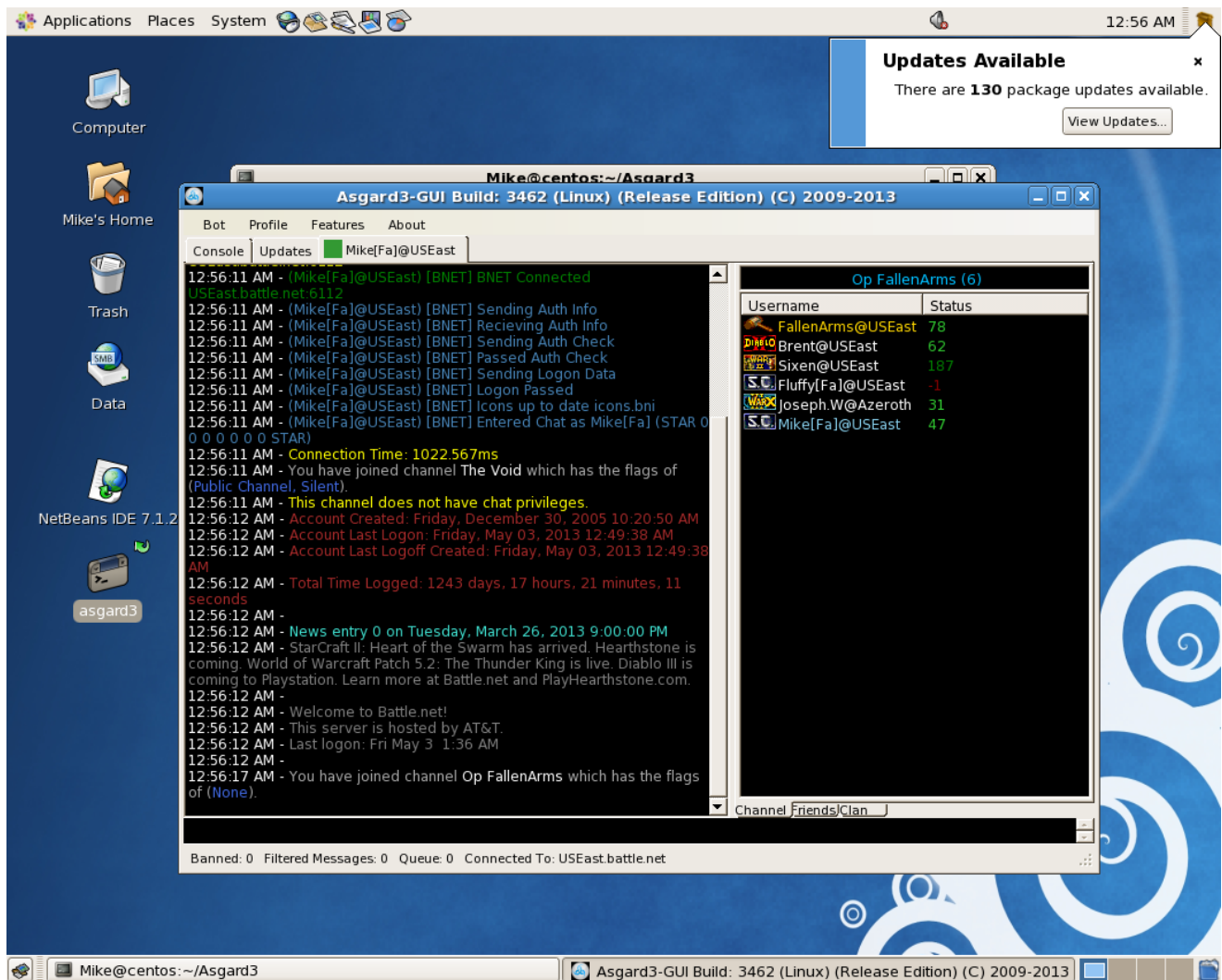
Windows Screenshot – Windows 7 x64



<http://www.mikeownage.com>

<http://www.mikeownage.com>

Linux Screenshot – Cent OS 5.8 Final



Asgard3-CLI – Asgard3-CLI.exe

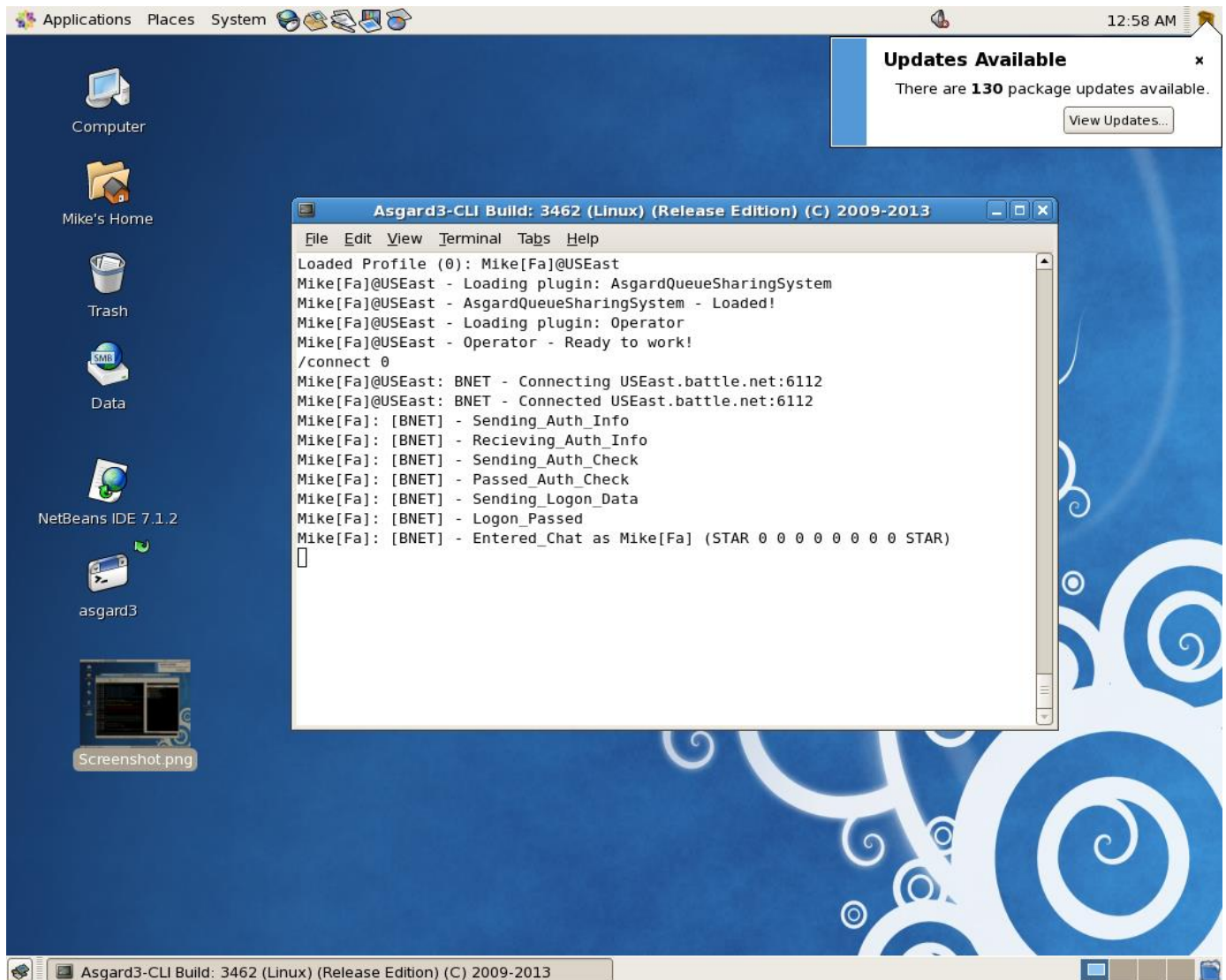
Doesn't have much of an user interface is designed to be run from command line and use minimal resources.

<http://www.mikeownage.com>

<http://www.mikeownage.com>

Windows Screenshot – Windows 7 x64

Linux Screenshot - Cent OS 5.8 Final



System Requirements

Asgard3 GUI – Minimal Requirements

- 1 GHz Single Core Processor
- 512MB RAM
- Hard Drive: 200mb including the Dot Net Framework 4.5
- Any video card or onboard video

Asgard3 CLI – Minimal Requirements

- 600MHz Single Core Processor

<http://www.mikeownage.com>

<http://www.mikeownage.com>

- 128MB RAM
- Hard Drive: 200mb including the Dot Net Framework 4.5
- Any video card or onboard video

Asgard3-GUI and Asgard3-CLI Recommended Requirements

- 1.2GHz Dual Core Processor
- 1GB of RAM
- Hard Drive: 200mb including the Dot Net Framework 4.5
- Any video card or onboard video

Supported Operating Systems

I can attest that Asgard3 works on the following operating systems.

- Windows 10 and 11
- Ubuntu 20.04.04 LTS using Mono 6.8.0.105
- Ubuntu 22.04.02 LTS using Mono 6.8.0.105

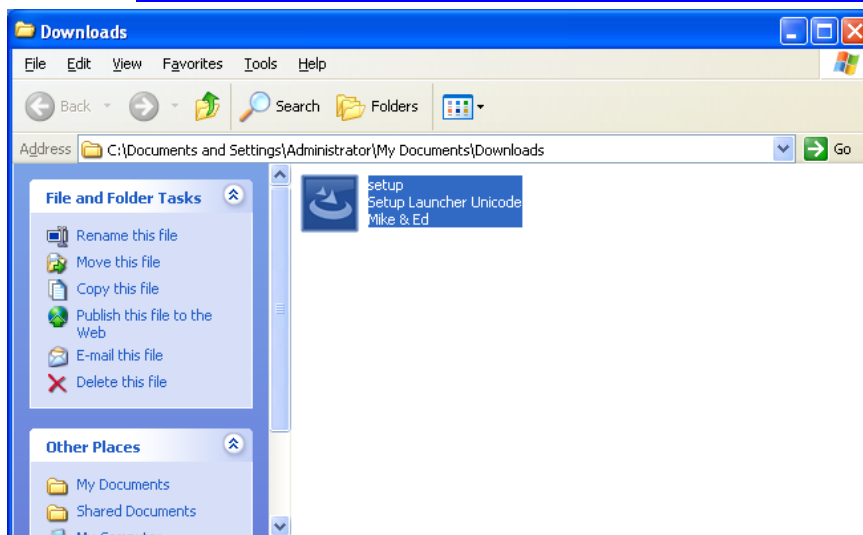
Installation

I will walk you through installing Asgard3 on Windows and Linux with this guide.

Windows Installation

Installing on any version of windows is simple. I am using Windows XP in a virtual environment for this guide (Windows XP likely is no longer supported as DotNet 4.5 was never released for it).

- Download <https://www.mikeownage.com/downloads/asgard3/installer/Asgard3Installer.msi>



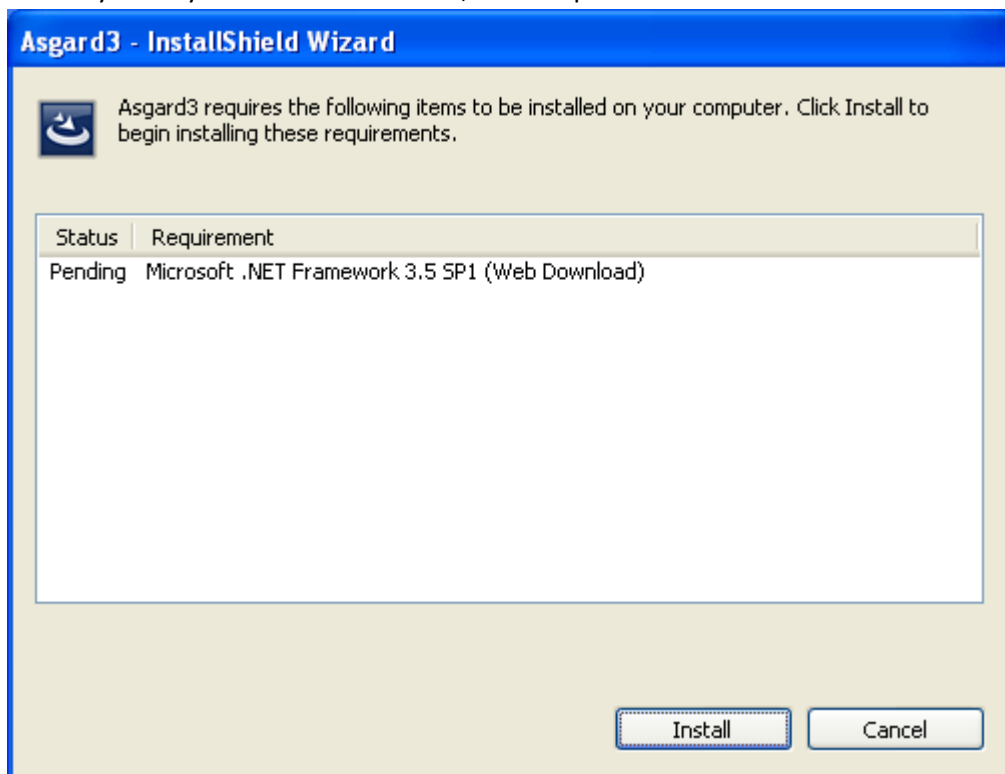
- Install setup.exe by double clicking it!

<http://www.mikeownage.com>

<http://www.mikeownage.com>



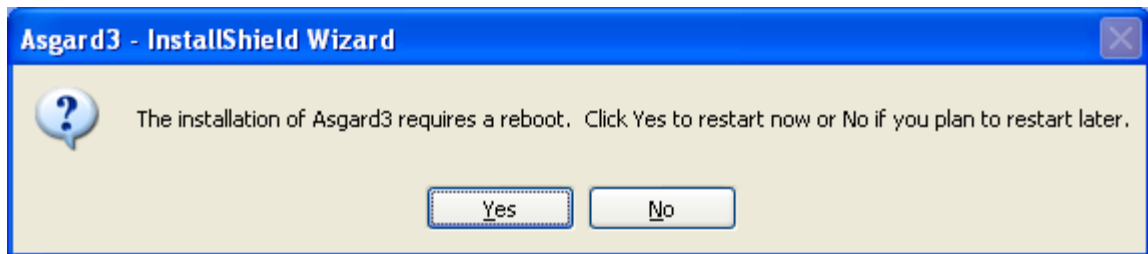
- You may or may not be asked to run it, if asked press Run.



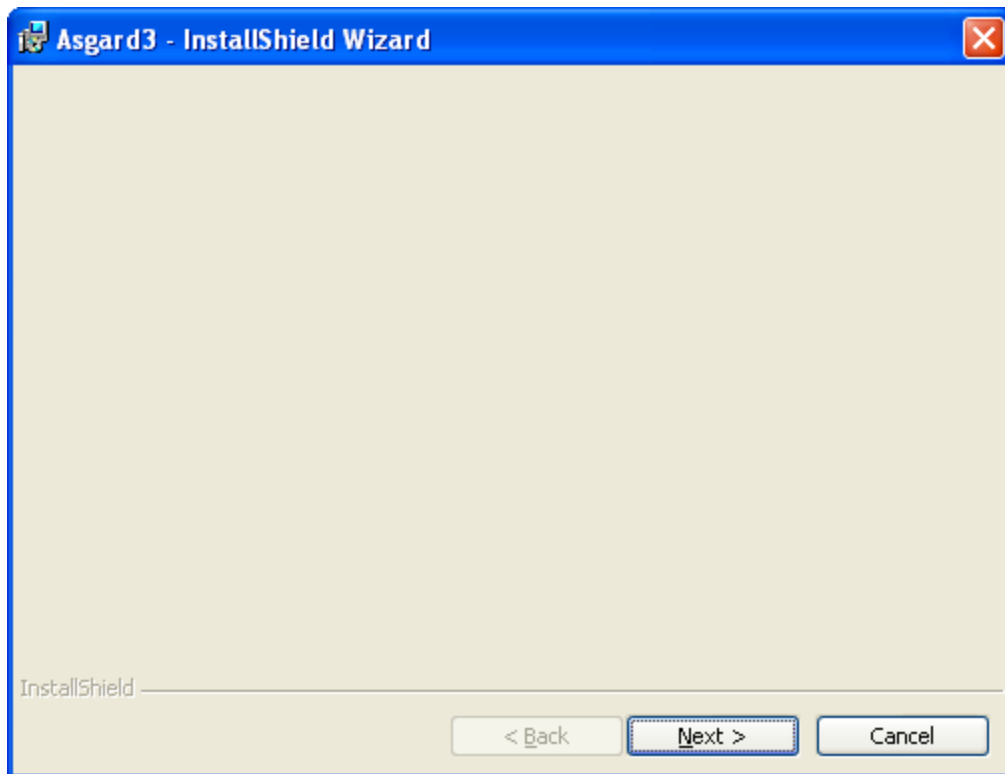
- If you do not have the required Dot Net Framework the installer will download it so press Install. If you have it you won't see this window so skip ahead.

<http://www.mikeownage.com>

<http://www.mikeownage.com>



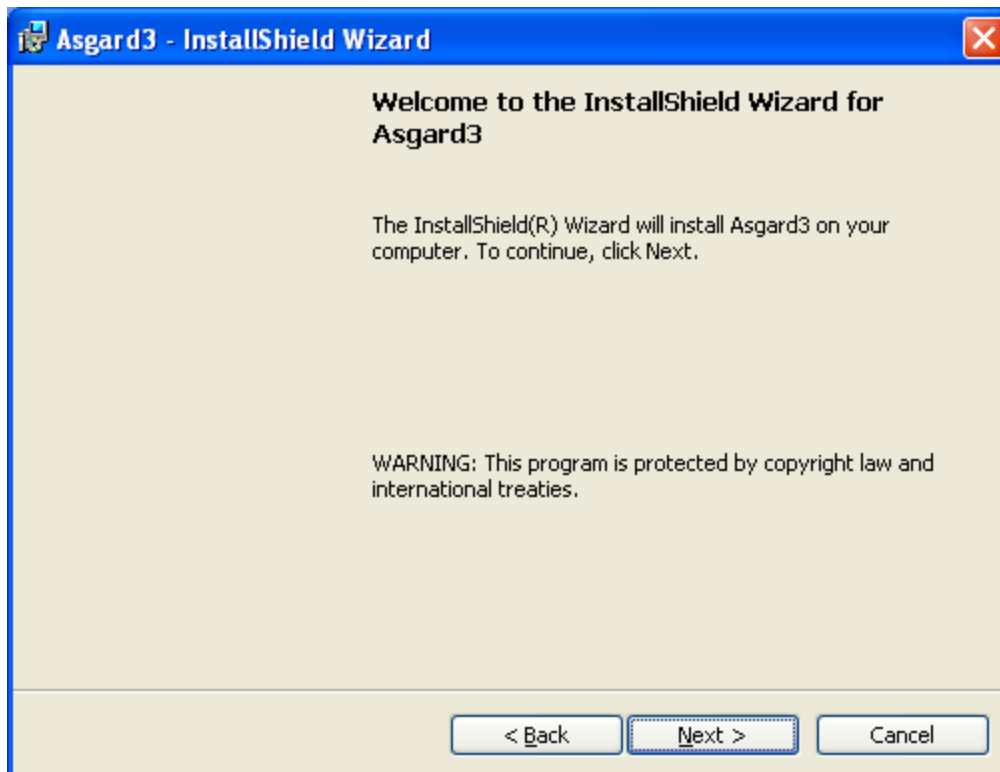
- Restart your computer if you want it isn't really required. If you don't want to restart hit no and just double click the setup.exe again it will bypass the need to restart your computer and after it opens up you will see.



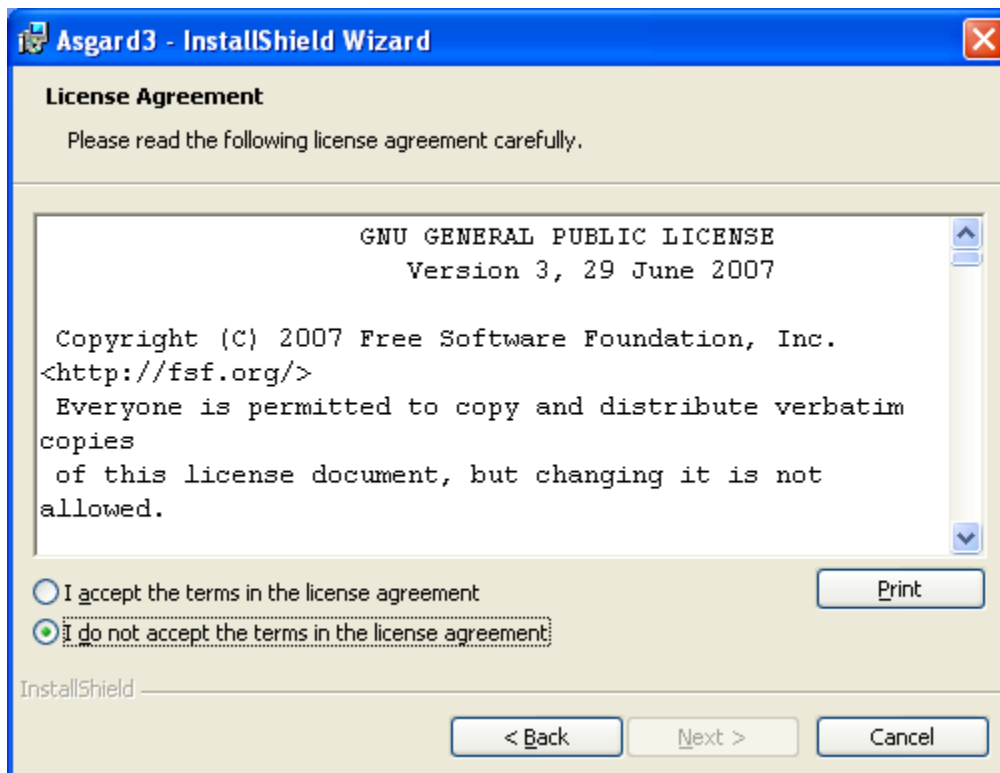
- Hit next

<http://www.mikeownage.com>

<http://www.mikeownage.com>



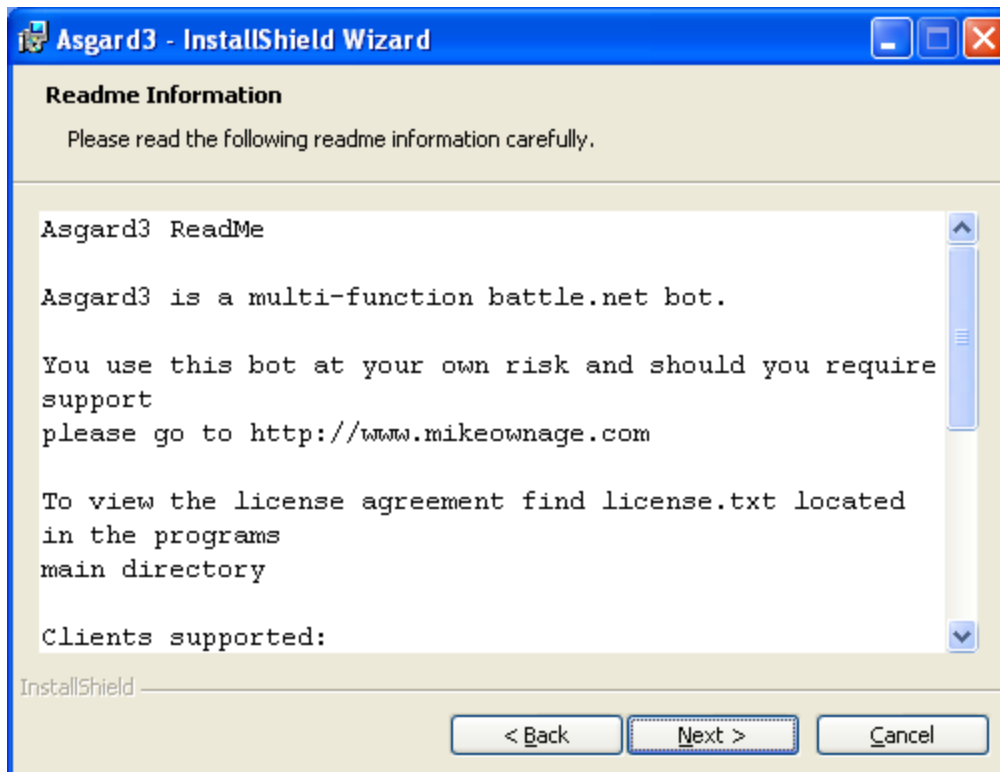
- Hit next



- I agree and hit next

<http://www.mikeownage.com>

<http://www.mikeownage.com>



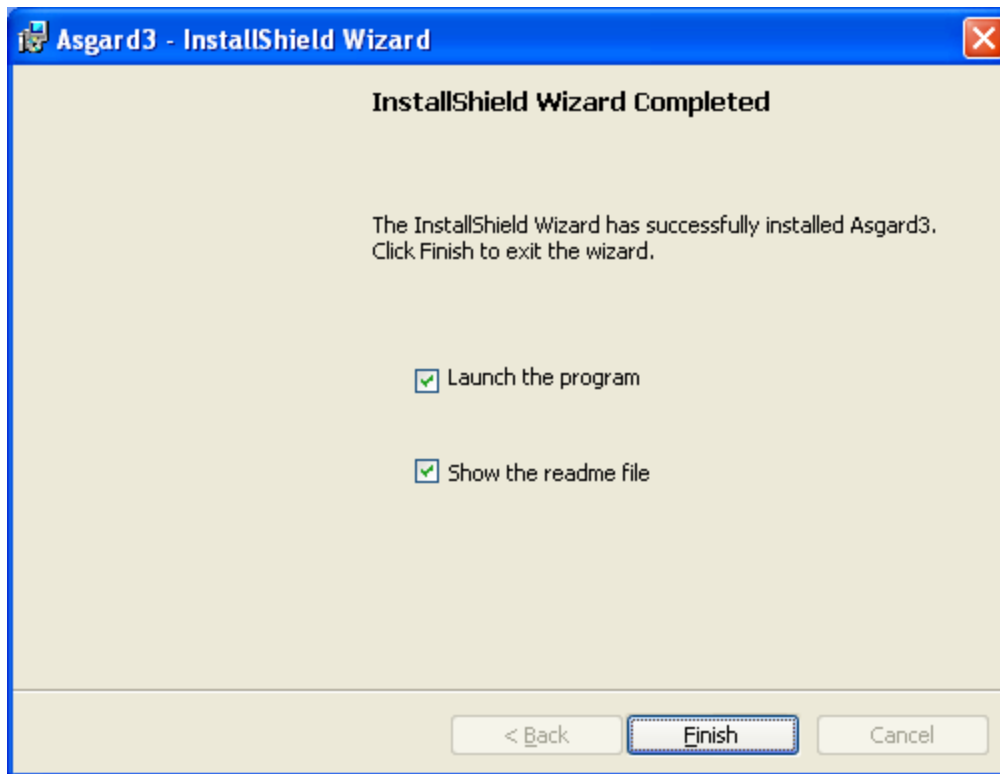
- Hit next



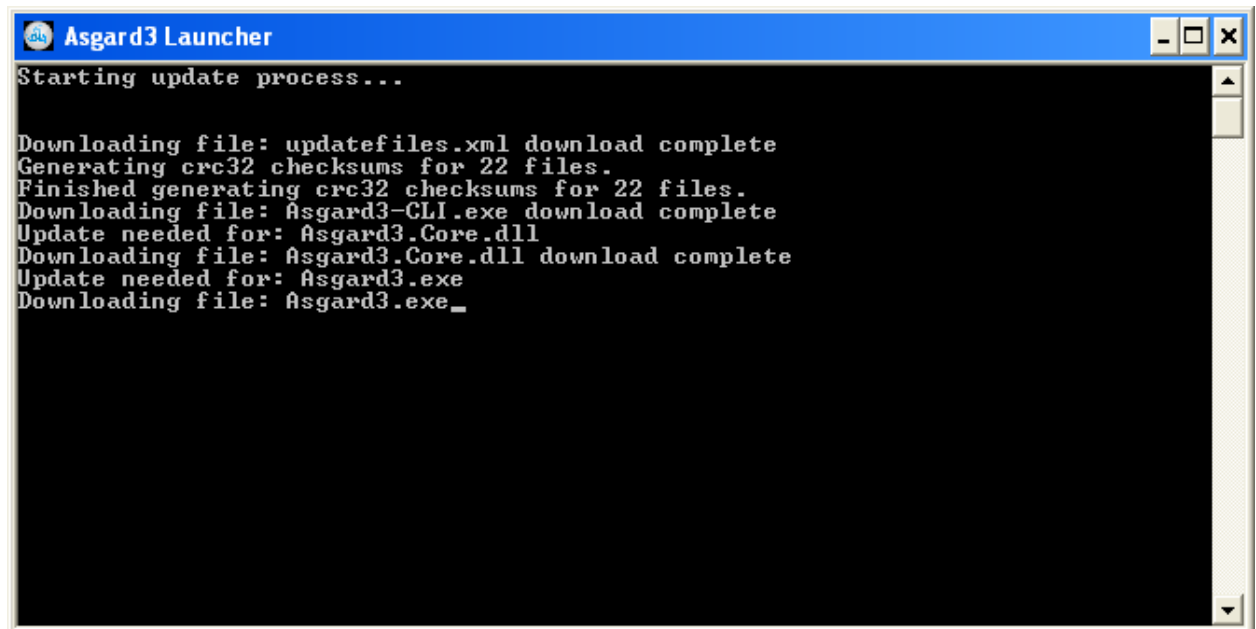
- Hit Install

<http://www.mikeownage.com>

<http://www.mikeownage.com>



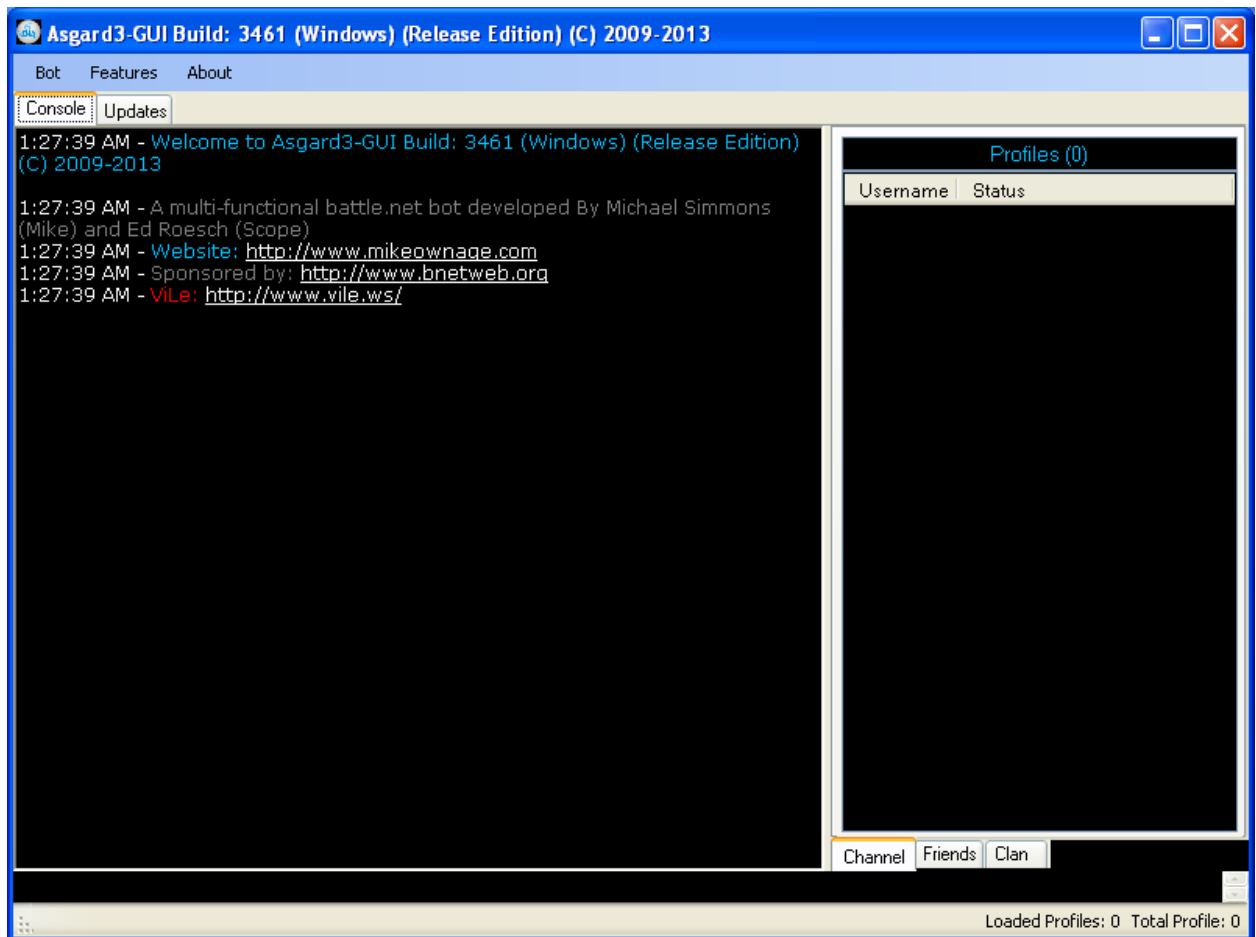
- Make sure you launch the profile but you can uncheck the readme file if you would like.



- The Asgard3 Launcher should start up and begin updating the bot if needed. After it's finished it will close and open the Asgard3-GUI

<http://www.mikeownage.com>

<http://www.mikeownage.com>



- You have now finished installing Asgard3 good job!

Linux Installation

Installation varies based on your version of Linux, on Linux Mono is required. As of right now I currently use Ubuntu 22.04.02 LTS with Mono version 6.8.0.105 when testing. I won't be making a step by step guide for Linux but I will provide links below.

Linux Download

<https://www.mikeownage.com/downloads/asgard3/installer/Release.zip>

Useful Links:

- [Install Mono on Linux | Mono \(mono-project.com\)](#)

Usage

We are going to cover the basic stuff such as creating a profile and what plugins to use so on and so forth along with all the features, plugins and commands.

Beginner Walkthrough

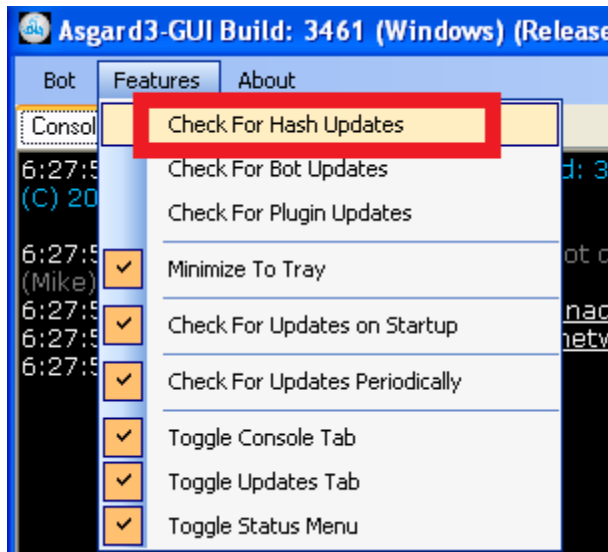
I will cover how to create your first profile using both the Asgard3-GUI and Asgard3-CLI executable.

<http://www.mikeownage.com>

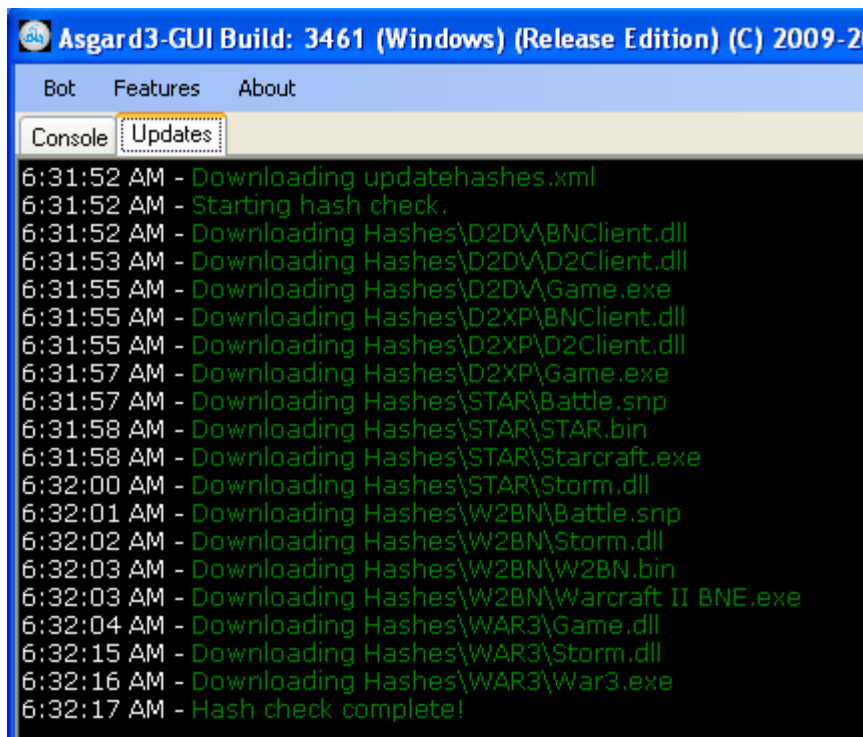
<http://www.mikeownage.com>

Asgard3-GUI - Walkthrough

So first off seeing as off the top of my head I can't even recall a BNLS Server IP or Hostname we will use local hashing to handle connections to battle.net. So at Asgard3's main window go to Features -> Check For Hash Updates and click the menu option.

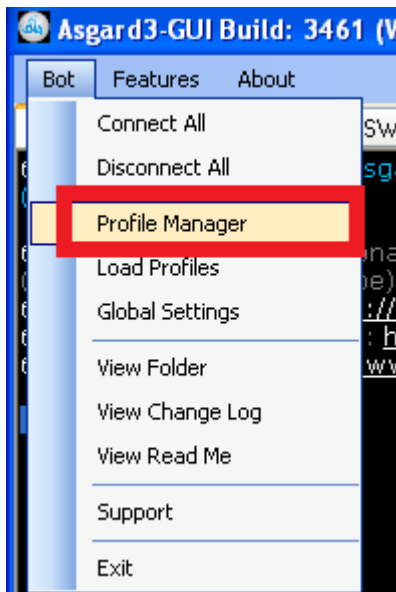


Once Asgard3 is done downloading all the hashes it should look something like this.

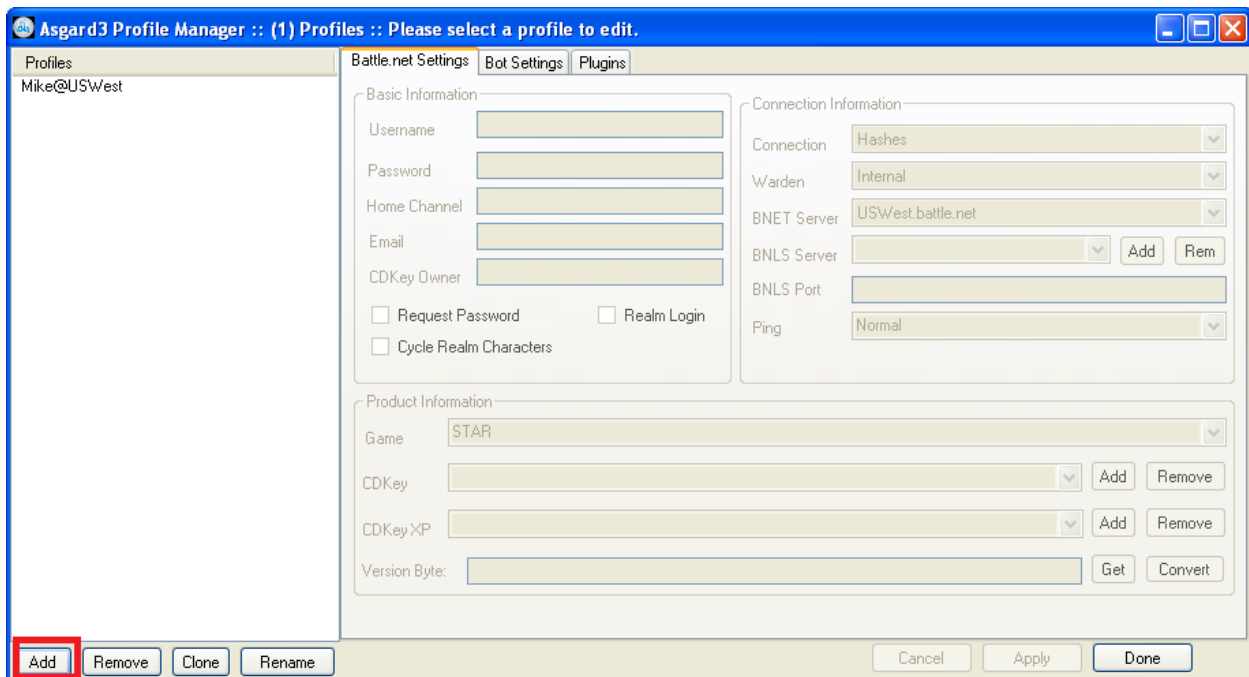


Now to create your first profile go to the Asgard3 main window then navigate to Bot -> Profile Manager and click Profile Manager.

<http://www.mikeownage.com>

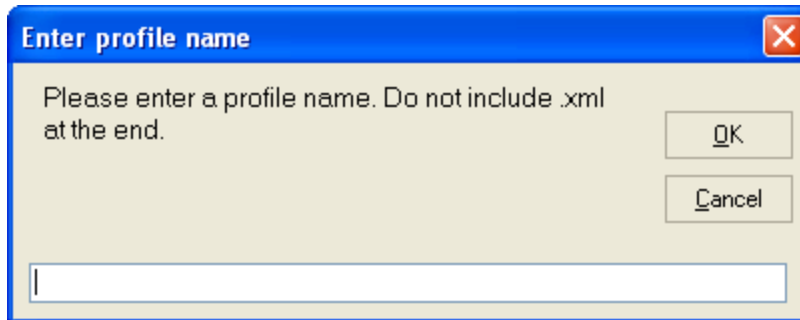


Now you should see the Profile Manager window and on the window hit the Add button in the bottom left of the Profile Manager Window.

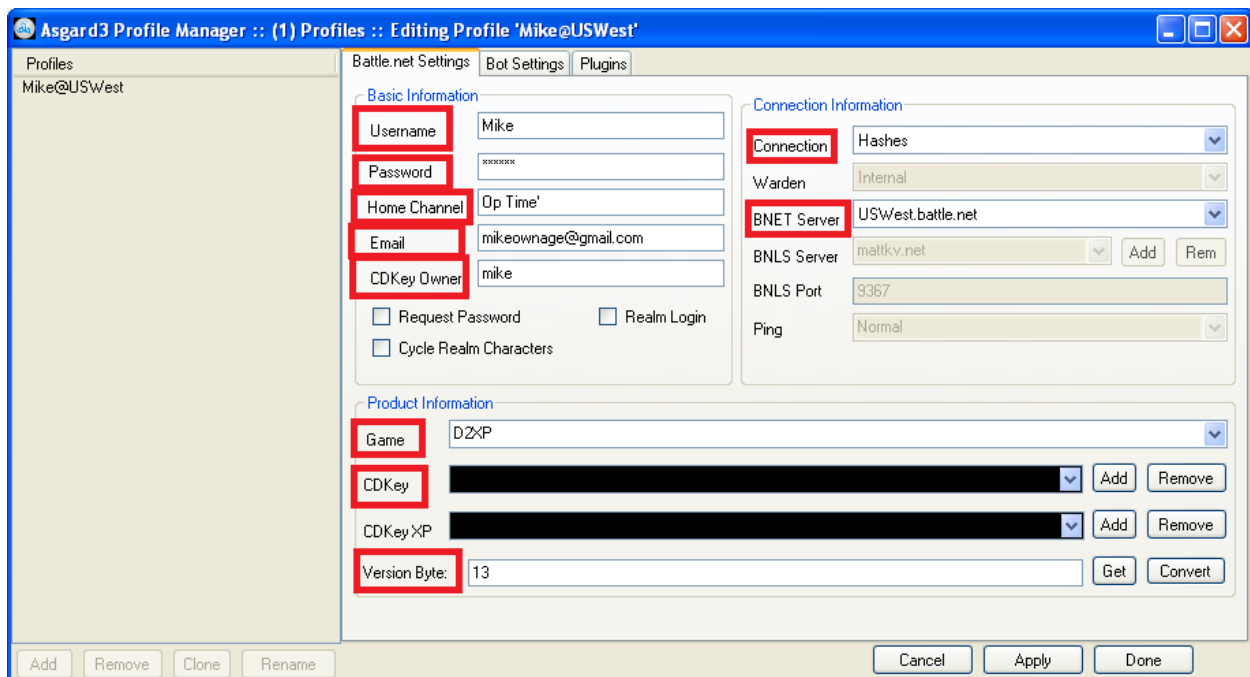


Now that you have done that a inputbox should appear asking you to input a profile name. I myself do username@realm so it's easier to manage my profiles. Don't use any special characters other then . and @ as they may interfere with windows file name conventions. Try to stick to numbers and letters only. Type in a profile name and hit ok. I myself typed in Mike@USWest.

<http://www.mikeownage.com>

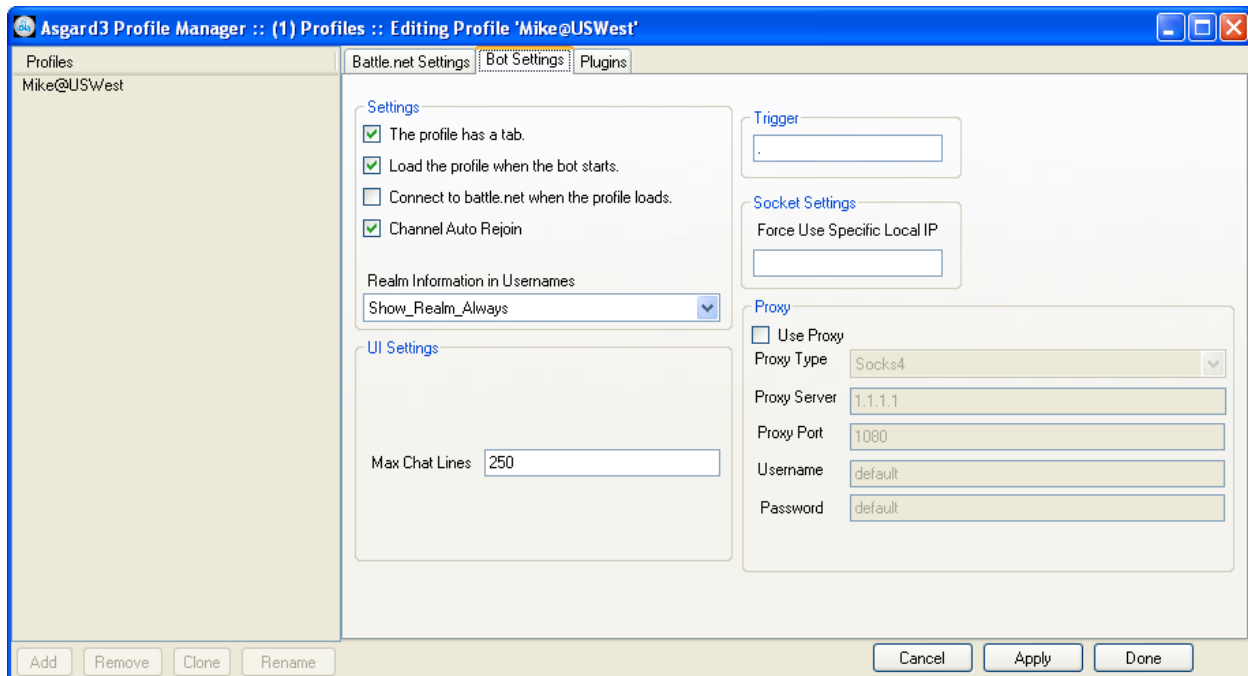


Now that we have added a Profile it will show up in the Profiles ListBox so go ahead and double click the Profile you just added in the ListBox. I have blanked out the CDKeys I use in my profile but you can see just how I do my settings. The settings in RED are required to connect to battle.net so you need to fill in at least that much and if you pick a game client that requires CDKeyXP then CDKeyXP will also be required to connect to battle.net

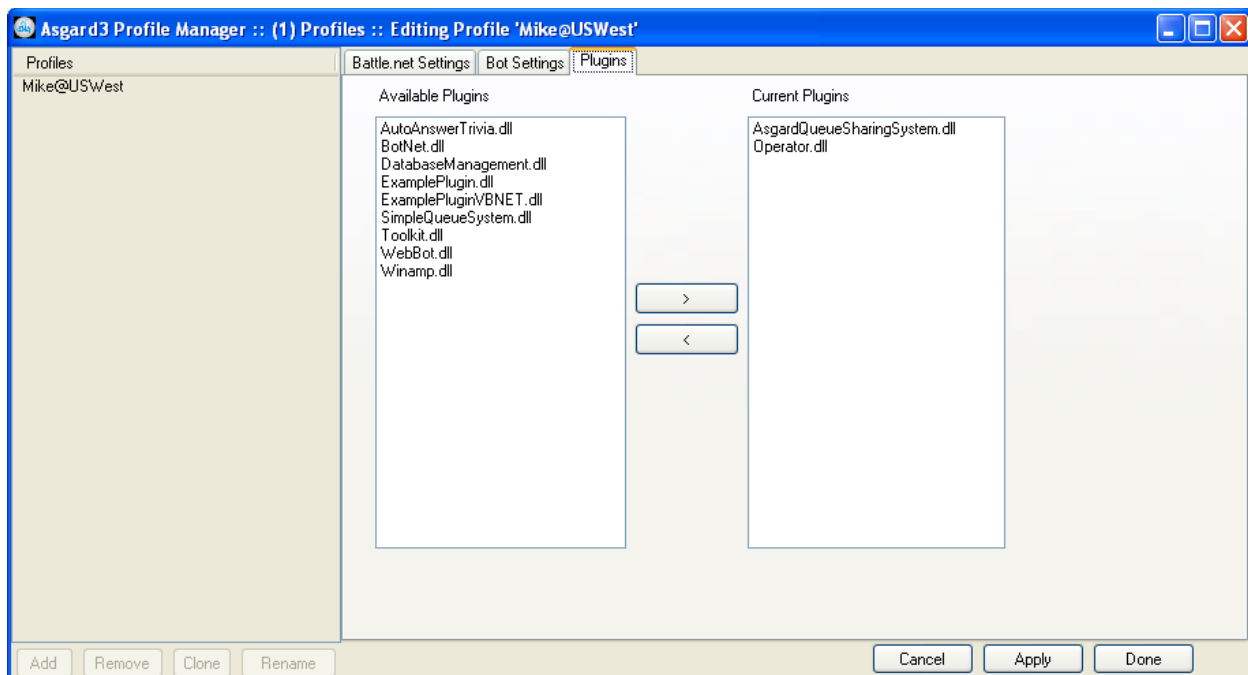


I will now post screenshots of the other tabs and this is what I consider recommend settings.

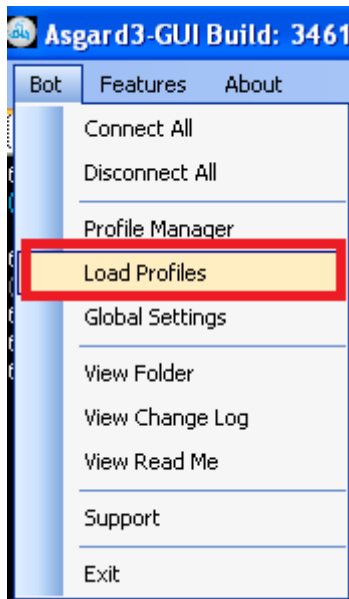
<http://www.mikeownage.com>



As for plugins I recommend you use the same ones as me I will get into why later in this guide.

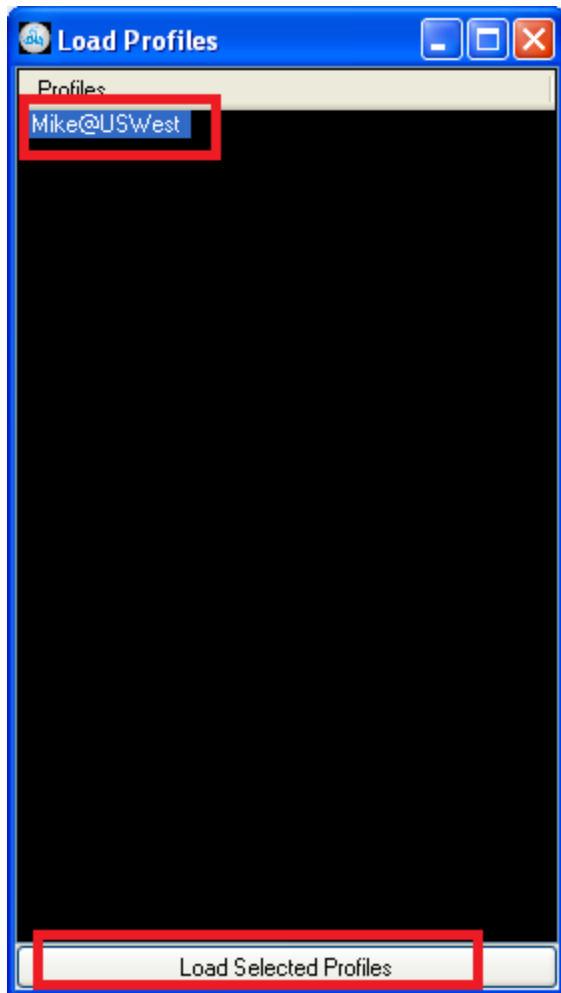


Now that you have gone and done all that you need to load the profile into the bot. Navigate to Bot -> Load Profiles and click Load Profiles.



After clicking load profiles you should see a new window listing the profile you added. Select that profile and click the Load Selected Profiles button located at the bottom of the Load Profiles Window.

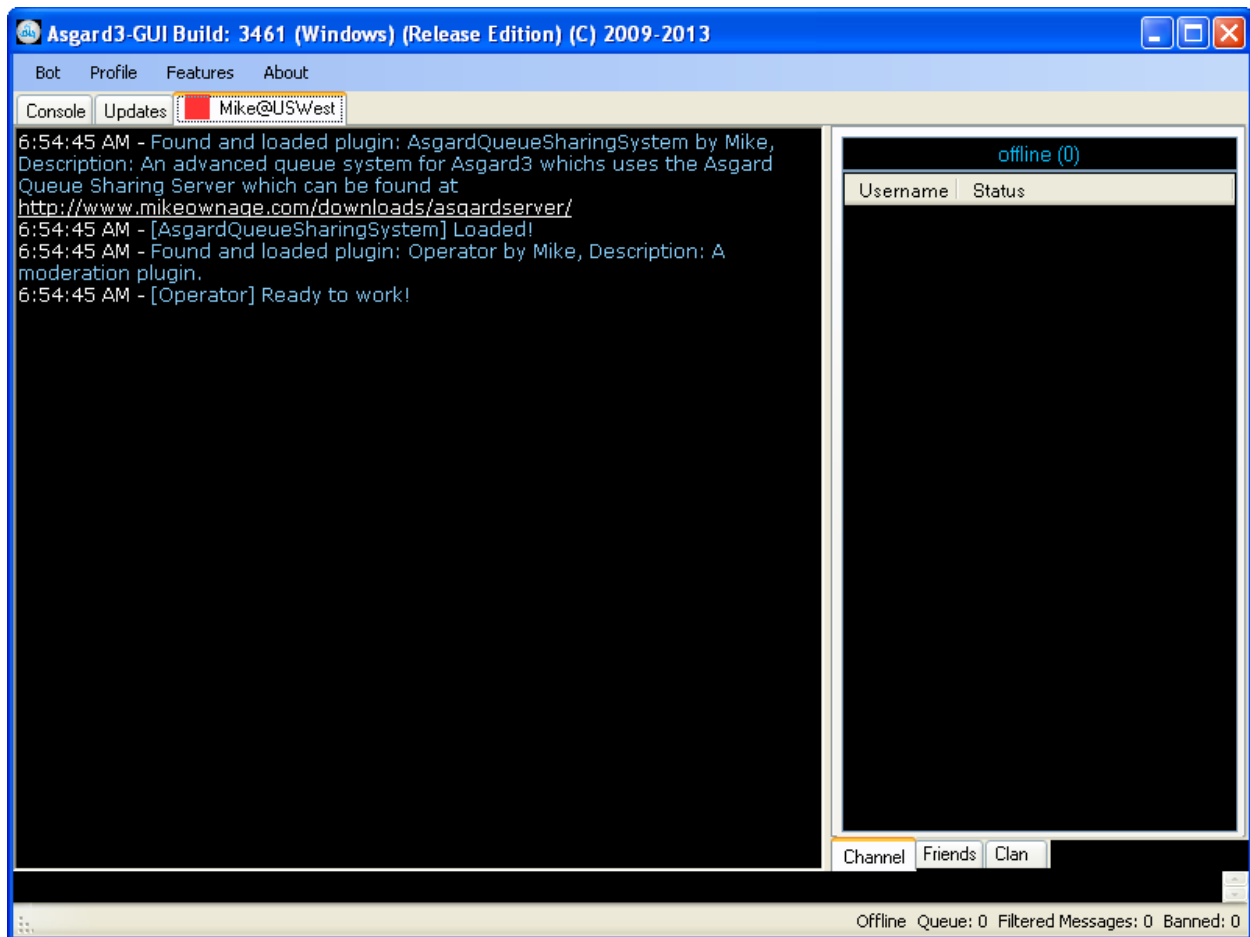
<http://www.mikeownage.com>



The bot should load the profile and it should be visible now. If you used the recommend plugins which I strongly suggest you do it should look a lot like this once the profile is loaded.

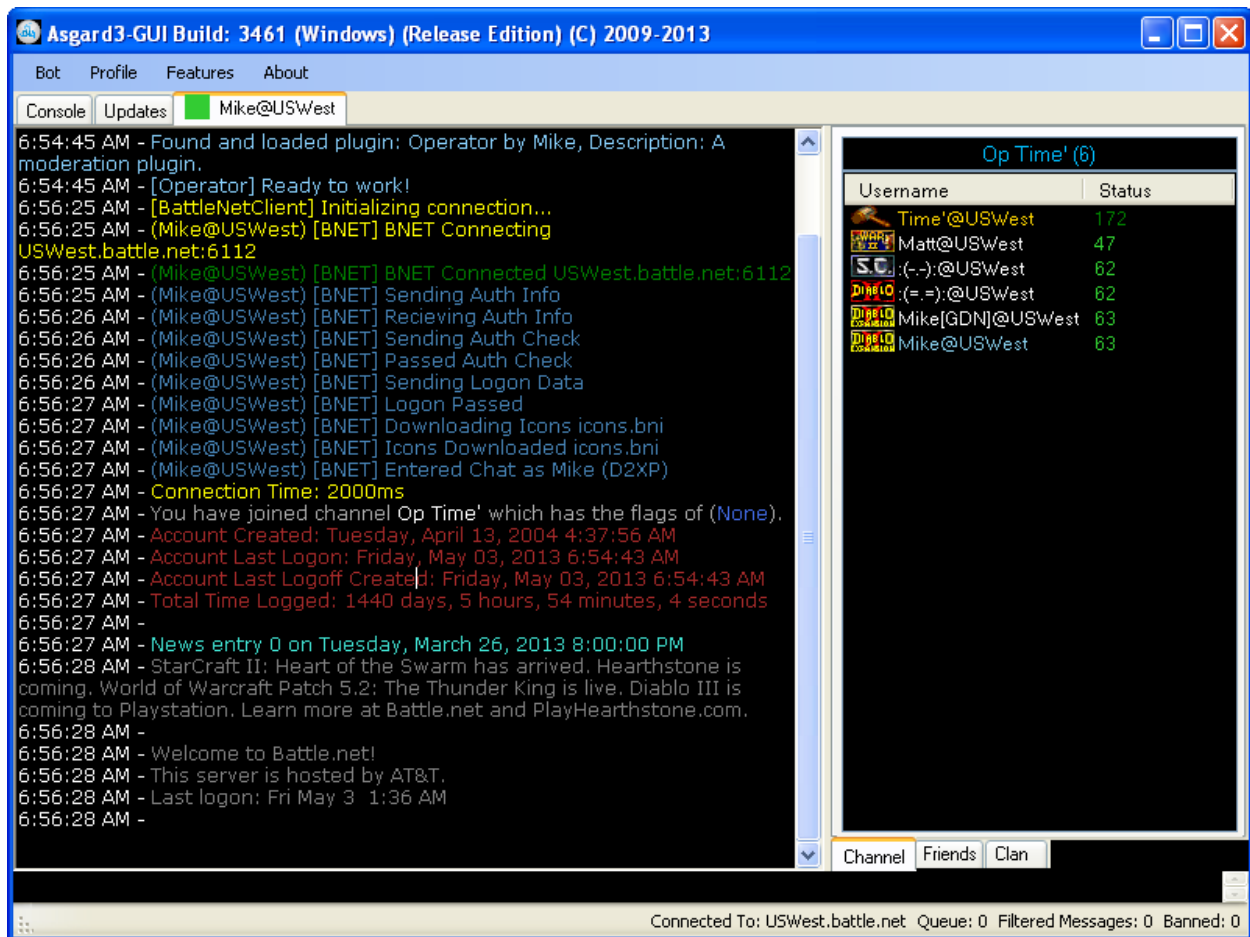
<http://www.mikeownage.com>

<http://www.mikeownage.com>

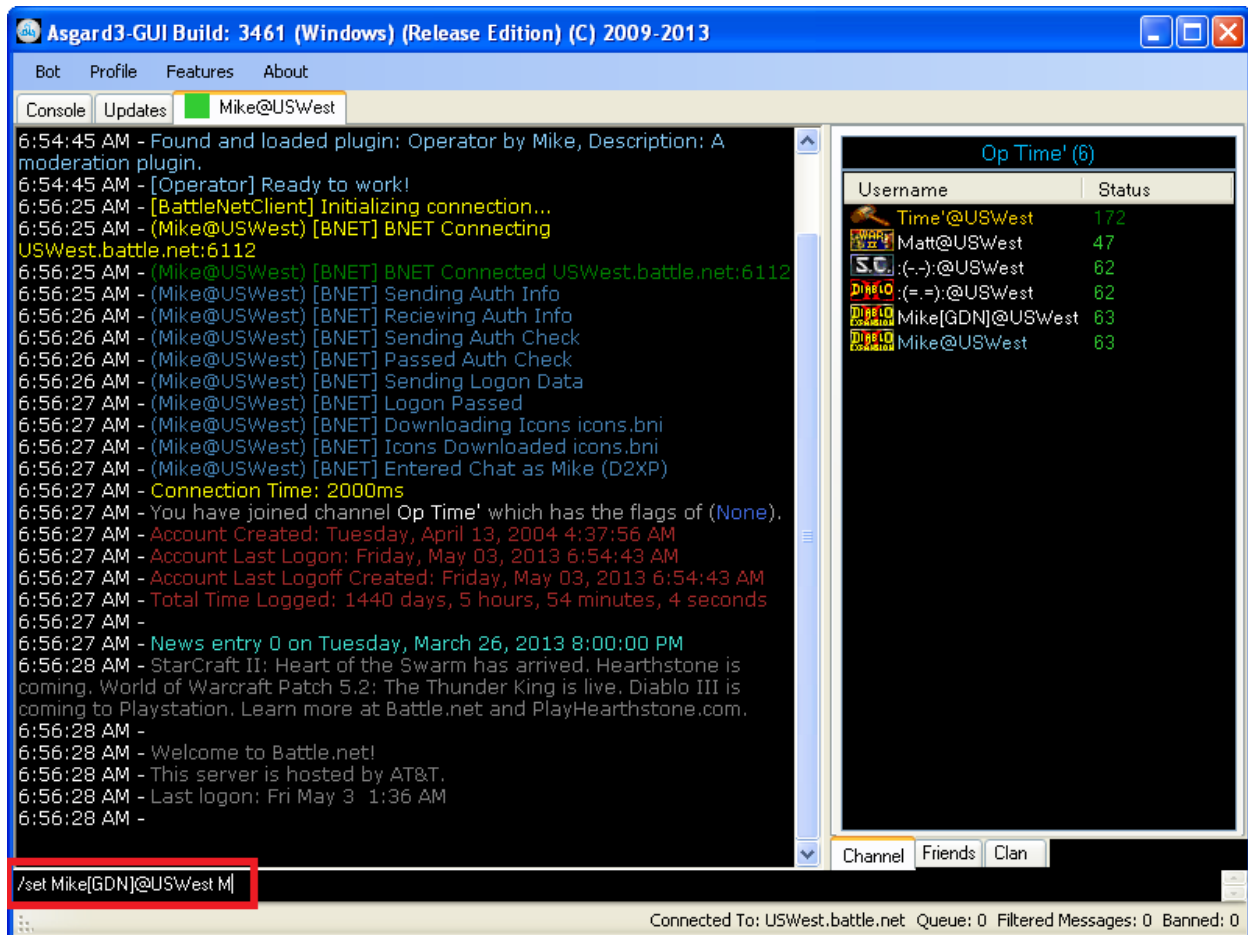


Now you simply need to press connect and you are on battle.net

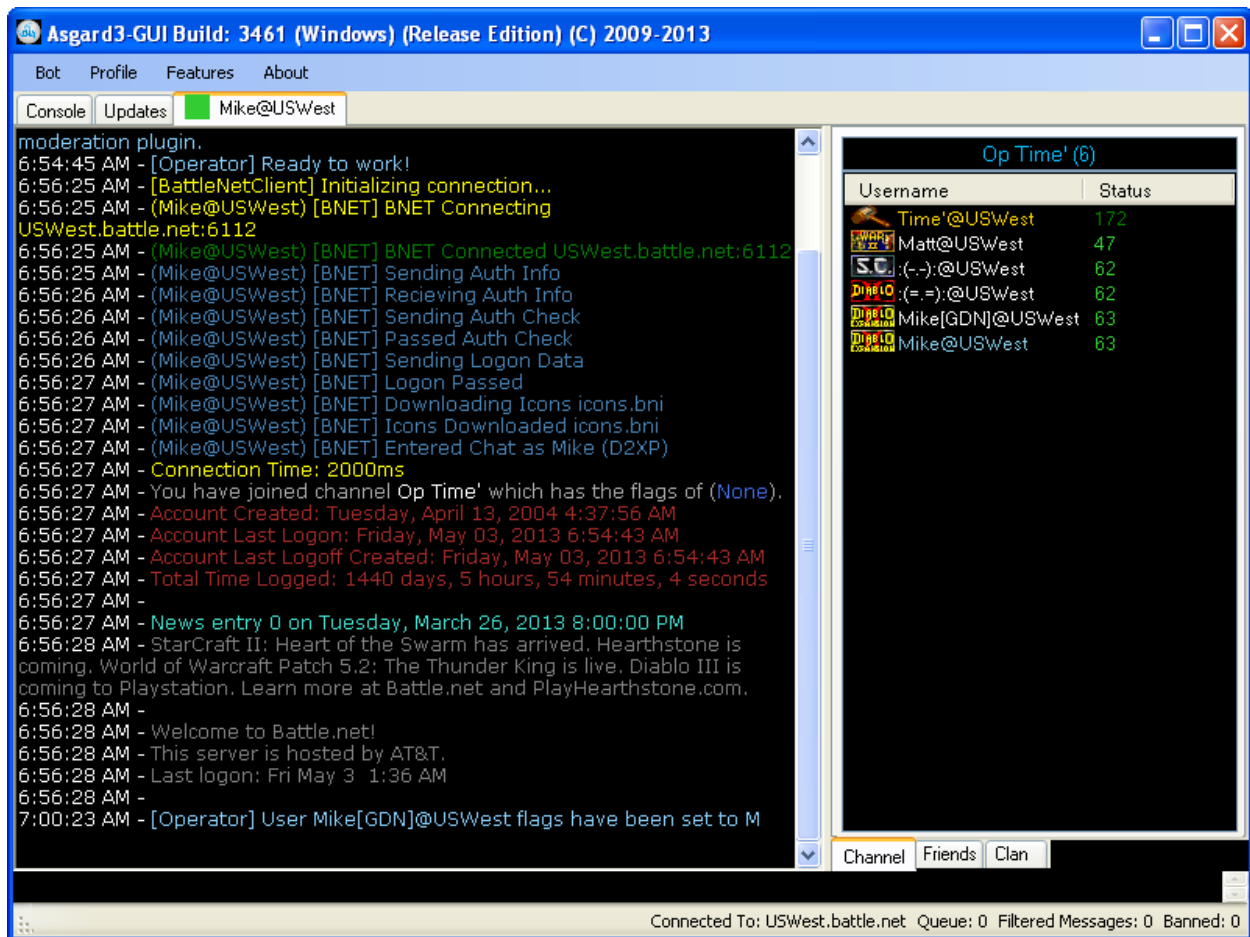
<http://www.mikeownage.com>



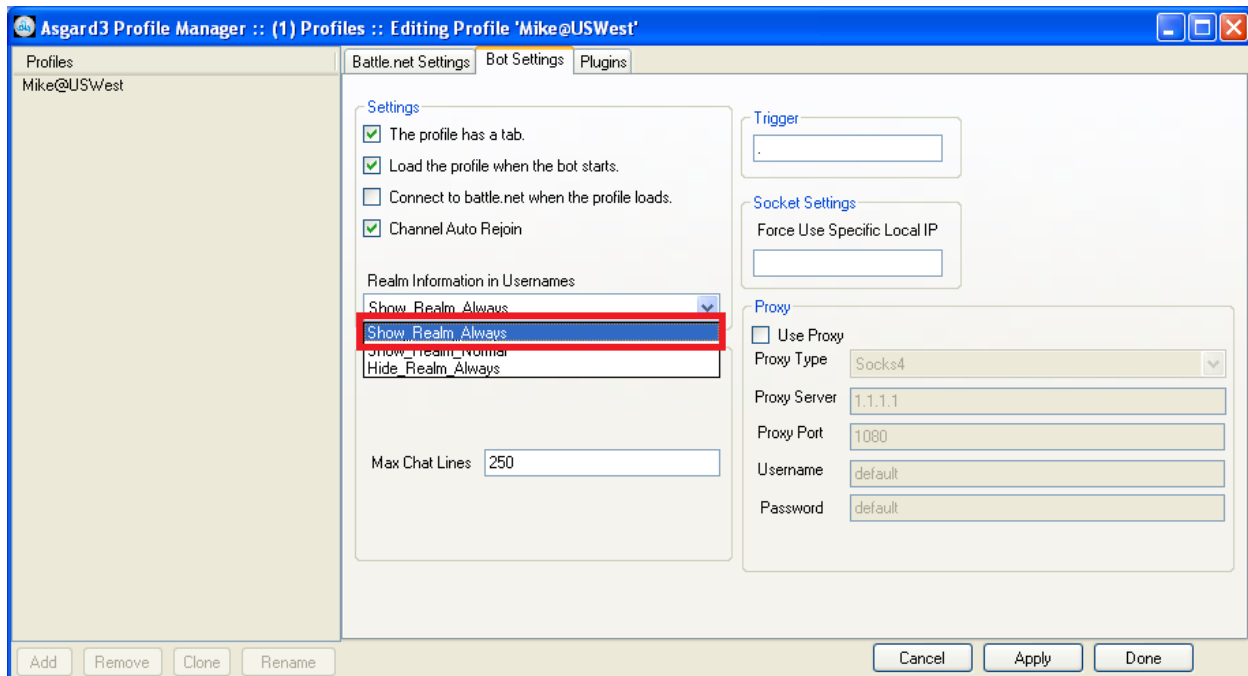
Now that you are on battle.net and if you loaded the recommended plugins you should added any names you want to the bots database so you can issue it commands from other names on battle.net type /set username@realm M where @realm is @useast, @azeroth, @uswest, @lordaeron etc. depending on what server the bot is on and what game client the name you are adding is from.



I wanted to add one of my names so I went ahead and did it.



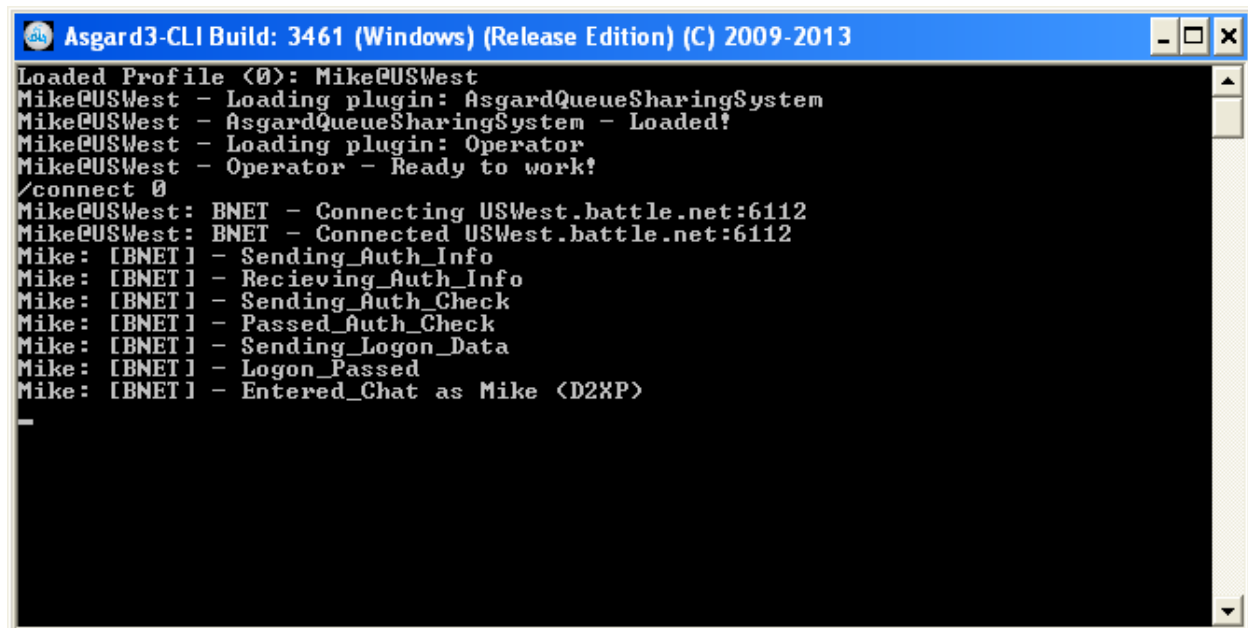
If at any time you are unsure of what realm the user belongs to and they are in the channel just make sure you have Profile Manager -> Your Profile -> Bot Settings -> Realm Information in Usernames -> Show Realm Always selected in the Profiles settings.



This concludes the Asgard3-GUI walkthrough

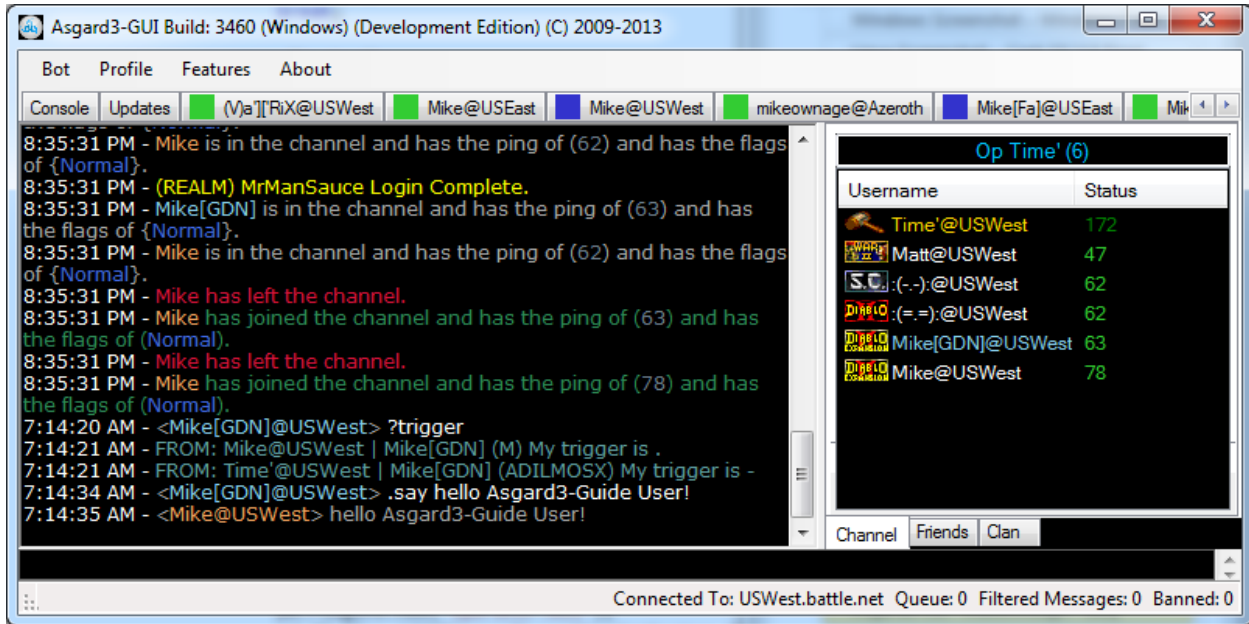
Asgard3-CLI - Walkthrough - Easy

WARNING – I recommend creating the profile using the Asgard3-GUI then launching the Asgard3-CLI and just connecting the profile. Editing XML files requires experience with XML and to new users you may end up with malformed XML files. If for any reason this isn't an option or you are experienced with XML files skip to If you follow my advice and create the profile in Asgard3-GUI all you have to do after that is start Asgard3-CLI and do the following.



<http://www.mikeownage.com>

As you can see I have now connected the bot and earlier in the Asgard3-CLI I added one of my other usernames and can now command the bot.



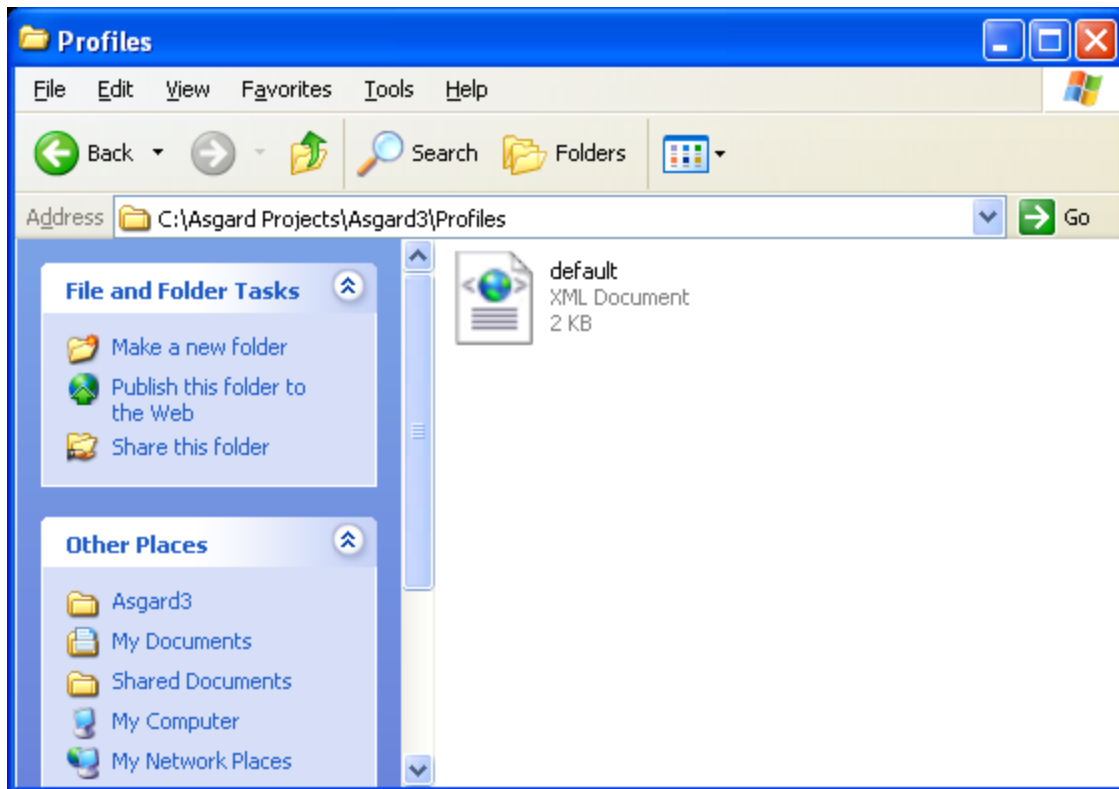
Asgard3-CLI - Walkthrough – Advanced

I am assuming that you have a complete fresh install and want to create a config without using the Asgard3-GUI for the walkthrough. First thing we have to do is open Asgard3-CLI.exe and type the /make-config command



You can see that it generated a default.xml file in BotFolder\Profiles

<http://www.mikeownage.com>



Before we go into editing the config you may also want to have the bot download the hashes required to connect to battle.net if you do not plan to use BNLS so type /hashes

```
Asgard3-CLI Build: 3461 (Windows) (Release Edition) (C) 2009-2013
/make-config
/hashes
Downloading file: updatehashes.xml
Checking for latest hashes...
Downloading file: Hashes\D2DU\BNClient.dll
Downloading file: Hashes\D2DU\D2Client.dll
Downloading file: Hashes\D2DU\Game.exe
Downloading file: Hashes\D2XP\BNClient.dll
Downloading file: Hashes\D2XP\D2Client.dll
```

While it downloads the hashes let's begin editing the config.xml file. I am using notepad as it's include with every version of windows. On Linux well if you are using Linux and need me to tell you what program to use to edit a file just uninstall Linux and get on windows. Here is what the default.xml config

looks like.



```

<?xml version="1.0" encoding="utf-8"?>
<Asgard3 xmlns:xsi="http://www.w3.org/2001/XMLSchema-instance" xmlns:
  <ConnectionSettings>
    <username>Mike</username>
    <password>Test</password>
    <cdkey1>Test</cdkey1>
    <homechannel>op time'</homechannel>
    <email>test@cookies.com</email>
    <cdkeyowner>mike</cdkeyowner>
    <bnls_server>bnls.bnetdev.net</bnls_server>
    <bnet_server>uswest.battle.net</bnet_server>
    <bnls_port>9367</bnls_port>
    <bnet_port>6112</bnet_port>
    <verbyte>24</verbyte>
    <connectiontype>BNLS</connectiontype>
    <pingtype>Normal</pingtype>
    <client>WAR3</client>
    <warden>Internal</warden>
    <LoginRealm>false</LoginRealm>
    <CycleRealmCharacters>false</CycleRealmCharacters>
    <AutomaticReconnect>true</AutomaticReconnect>
    <AutoRejoin>true</AutoRejoin>
    <FilterLevel>3</FilterLevel>
    <UseProxy>false</UseProxy>
    <ProxyServer>1.1.1.1</ProxyServer>
    <ProxyPort>1080</ProxyPort>
    <ProxyType>Socks4</ProxyType>
    <ProxyUsername>default</ProxyUsername>
    <ProxyPassword>default</ProxyPassword>
  </ConnectionSettings>
  <BotSettings>
    <GUI>true</GUI>
    <AutoLoad>true</AutoLoad>
    <AutoConnect>false</AutoConnect>
    <UserRealmFormat>Show_Realm_Normal</UserRealmFormat>
    <LineLimit>250</LineLimit>
    <TimestampFormat>{0} - </TimestampFormat>
    <ShowJoinsAndLeaves>true</ShowJoinsAndLeaves>
    <ShowBans>true</ShowBans>
    <ShowFilteredBans>true</ShowFilteredBans>
    <Filters>true</Filters>
    <Trigger>.</Trigger>
    <IsIdleCount>300</IsIdleCount>
    <UseAdvancedIcons>true</UseAdvancedIcons>
    <Style>default</Style>
    <IconSet>modern</IconSet>
    <Alwayswhisper>true</Alwayswhisper>
  </BotSettings>
  <PluginVariables>
    <PluginVariables />
  </PluginVariables>
  <Plugins>
    <Plugin>operator.dll</Plugin>
    <Plugin>AsgardQueuesharingssystem.dll</Plugin>
  </Plugins>
</Asgard3>

```

<http://www.mikeownage.com>

I am going to highlight the settings that are most important to getting it to connect to battle.net

```

default - Notepad
File Edit Format View Help
<?xml version="1.0" encoding="utf-8"?>
<Asgard3 xmlns:xsi="http://www.w3.org/2001/XMLSchema-instance" xmlns:
  <ConnectionSettings>
    <username>Mike</username>
    <password>Test</password>
    <cdkey1>Test</cdkey1>
    <homechannel>op time'</homechannel>
    <email>test@cookies.com</email>
    <cdkeyowner>mike</cdkeyowner>
    <bns_server>bns.bnetdev.net</bns_server>
    <bnet_server>uswest.battle.net</bnet_server>
    <bns_port>9367</bns_port>
    <bnet_port>6112</bnet_port>
    <verbyte>24</verbyte>
    <connectiontype>BNLS</connectiontype>
    <intertype>Normal</intertype>
    <client>WAR3</client>
    <warden>Internal</warden>
    <LoginRealm>>false</LoginRealm>
    <CycleRealmCharacters>>false</CycleRealmCharacters>
    <AutomaticReconnect>true</AutomaticReconnect>
    <AutoRejoin>true</AutoRejoin>
    <FilterLevel>3</FilterLevel>
    <UseProxy>>false</UseProxy>
    <ProxyServer>1.1.1.1</ProxyServer>
    <ProxyPort>1080</ProxyPort>
    <ProxyType>Socks4</ProxyType>
    <ProxyUsername>default</ProxyUsername>
    <ProxyPassword>default</ProxyPassword>
  </ConnectionSettings>
  <BotSettings>
    <GUI>true</GUI>
    <AutoLoad>true</AutoLoad>
    <AutoConnect>>false</AutoConnect>
    <UserRealmFormat>Show_Realm_Normal</UserRealmFormat>
    <LineLimit>250</LineLimit>
    <TimestampFormat>{0} - </TimestampFormat>
    <ShowJoinsAndLeaves>true</ShowJoinsAndLeaves>
    <ShowBans>true</ShowBans>
    <ShowFilteredBans>true</ShowFilteredBans>
    <Filters>true</Filters>
    <Trigger>.</Trigger>
    <IsIdleCount>300</IsIdleCount>
    <UseAdvancedIcons>true</UseAdvancedIcons>
    <Style>default</Style>
    <IconSet>modern</IconSet>
    <AlwaysWhisper>true</AlwaysWhisper>
  </BotSettings>
  <PluginVariables>
    <PluginVariables />
  </PluginVariables>
  <Plugins>
    <Plugin>operator.dll</Plugin>
    <Plugin>AsgardQueuesharingssystem.dll</Plugin>
  </Plugins>
</Asgard3>

```

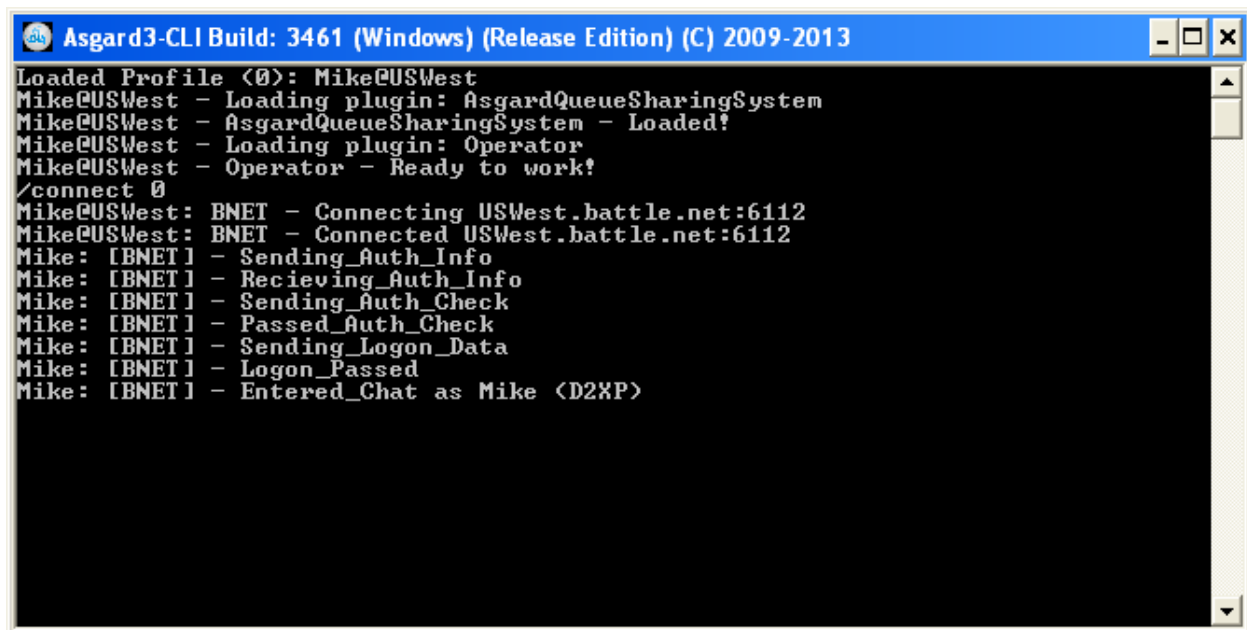
<http://www.mikeownage.com>

<http://www.mikeownage.com>

Now it's time to go over the settings that aren't self-explanatory.

Settings	Possible Values
cdkey1	Your cdkey
verbyte	To get the latest verbyte for your client go to http://www.mikeownage.com/downloads/battle.net/verbytes.txt
connectiontype	Hashes, BNLS (Use Hashes if you followed my walkthrough)
Client	Supported clients STAR, SEXP, D2DV, D2XP, W2BN, WAR3, W3XP If using D2XP or W3XP add the following <cdkey2>your cdkey here</cdkey2> under <cdkey1>your cdkey here</cdkey1> .

Now close the bot before you save and close your profile xml file. Then save save and close the xml file. Open up the Asgard3-CLI.exe again and type /connect 0

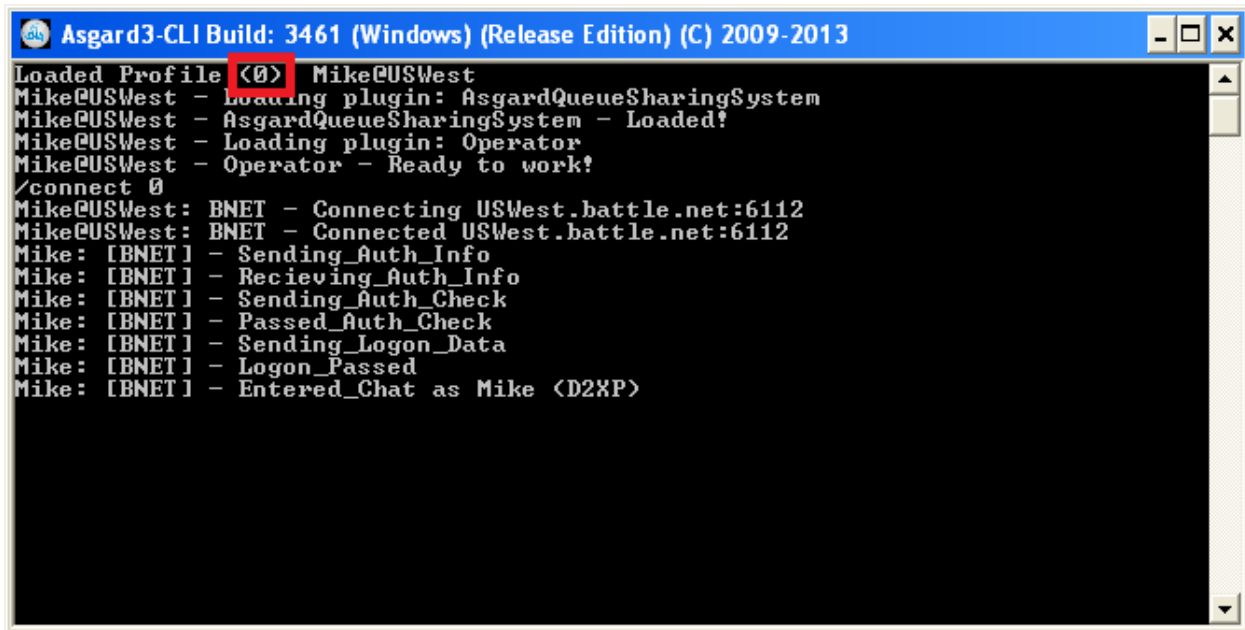


```

Asgard3-CLI Build: 3461 (Windows) (Release Edition) (C) 2009-2013
Loaded Profile <0>: Mike@USWest
Mike@USWest - Loading plugin: AsgardQueueSharingSystem
Mike@USWest - AsgardQueueSharingSystem - Loaded!
Mike@USWest - Loading plugin: Operator
Mike@USWest - Operator - Ready to work!
/connect 0
Mike@USWest: BNET - Connecting USWest.battle.net:6112
Mike@USWest: BNET - Connected USWest.battle.net:6112
Mike: [BNET] - Sending_Auth_Info
Mike: [BNET] - Recieving_Auth_Info
Mike: [BNET] - Sending_Auth_Check
Mike: [BNET] - Passed_Auth_Check
Mike: [BNET] - Sending_Logon_Data
Mike: [BNET] - Logon_Passed
Mike: [BNET] - Entered_Chat as Mike <D2XP>
  
```

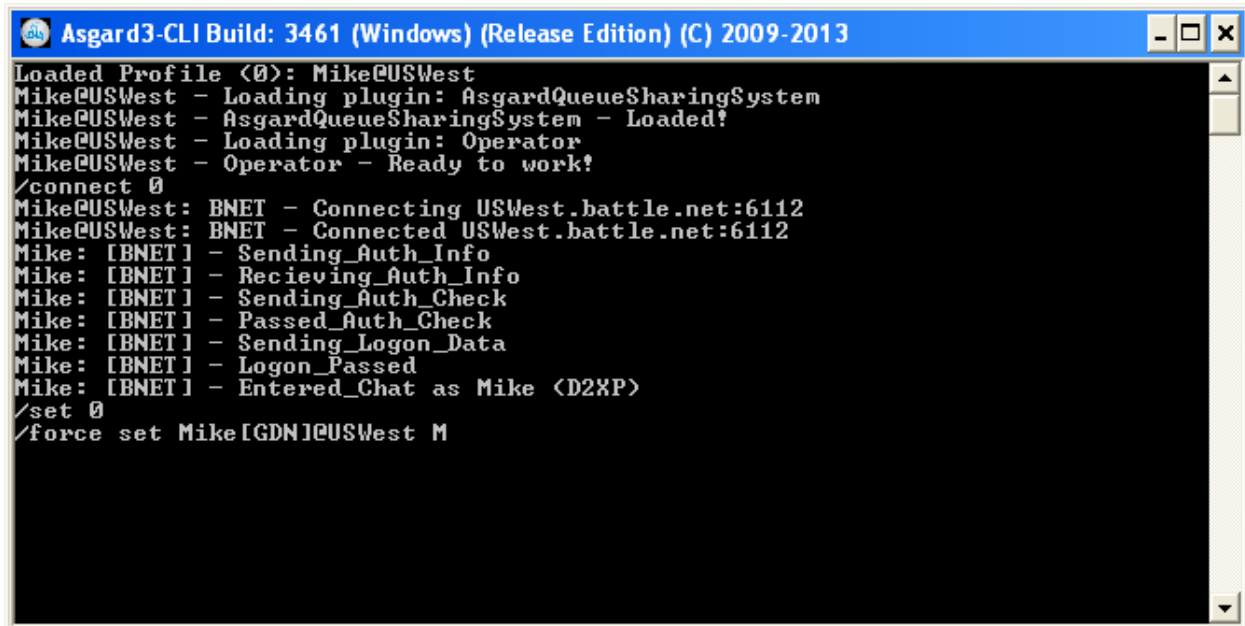
Now that the bot is connected you most likely want to add yourself so first we need to tell the bot which profile we want to pass commands to with /set ProfileID to find out my ProfileID I look at the information the bot loaded when it started. I have highlighted it in red in the screenshot below.

<http://www.mikeownage.com>



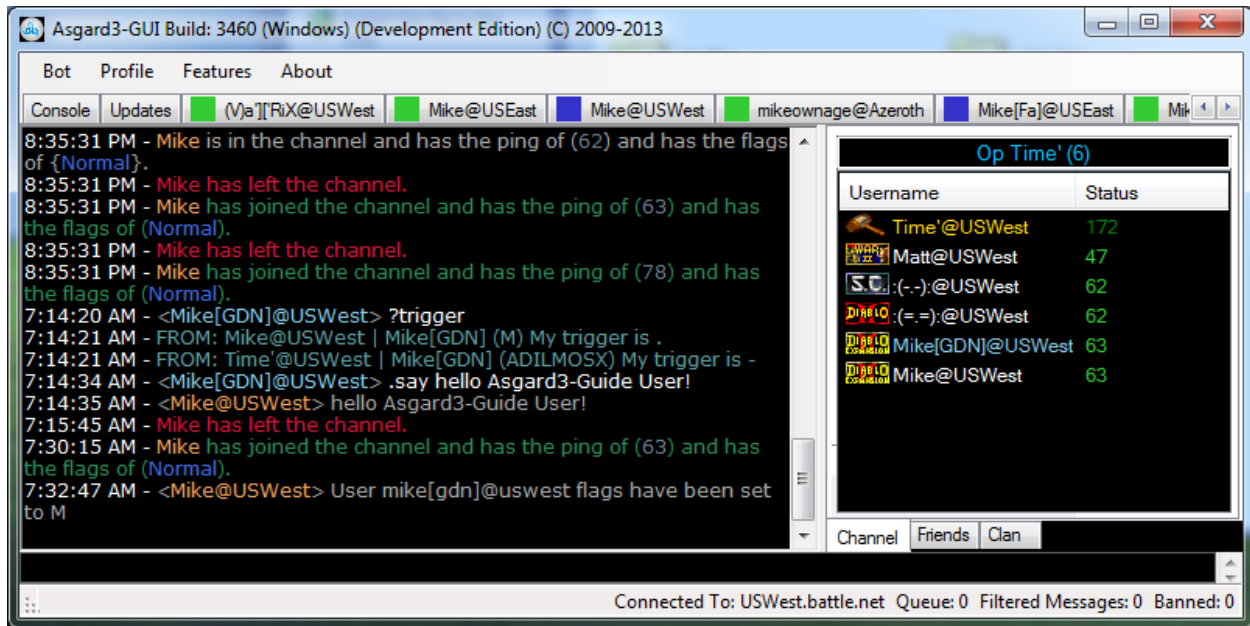
```
Asgard3-CLI Build: 3461 (Windows) (Release Edition) (C) 2009-2013
Loaded Profile <0> Mike@USWest
Mike@USWest - Loading plugin: AsgardQueueSharingSystem
Mike@USWest - AsgardQueueSharingSystem - Loaded!
Mike@USWest - Loading plugin: Operator
Mike@USWest - Operator - Ready to work!
/connect 0
Mike@USWest: BNET - Connecting USWest.battle.net:6112
Mike@USWest: BNET - Connected USWest.battle.net:6112
Mike: [BNET] - Sending Auth_Info
Mike: [BNET] - Recieving Auth_Info
Mike: [BNET] - Sending Auth_Check
Mike: [BNET] - Passed Auth_Check
Mike: [BNET] - Sending Logon_Data
Mike: [BNET] - Logon_Passed
Mike: [BNET] - Entered_Chat as Mike <D2XP>
```

So I now know my ProfileID is 0 so I type /set 0 and then I type /force set Mike[GDN]@USWest M



```
Asgard3-CLI Build: 3461 (Windows) (Release Edition) (C) 2009-2013
Loaded Profile <0>: Mike@USWest
Mike@USWest - Loading plugin: AsgardQueueSharingSystem
Mike@USWest - AsgardQueueSharingSystem - Loaded!
Mike@USWest - Loading plugin: Operator
Mike@USWest - Operator - Ready to work!
/connect 0
Mike@USWest: BNET - Connecting USWest.battle.net:6112
Mike@USWest: BNET - Connected USWest.battle.net:6112
Mike: [BNET] - Sending Auth_Info
Mike: [BNET] - Recieving Auth_Info
Mike: [BNET] - Sending Auth_Check
Mike: [BNET] - Passed Auth_Check
Mike: [BNET] - Sending Logon_Data
Mike: [BNET] - Logon_Passed
Mike: [BNET] - Entered_Chat as Mike <D2XP>
/set 0
/force set Mike[GDN]@USWest M
```

And here you can see the bot reporting that it added me with the flags of M



This concludes the advanced walkthrough for Asgard3-CLI.

Core Commands

I will now cover the commands specific to both Asgard3-GUI and Asgard3-CLI. These commands are provided by the bot itself and not any plugins. I will cover plugins that I have designed later in this guide.

Asgard3-CLI - Core Commands

/quit	Shuts down the bot
/exit	
/hashes	Downloads game hashes
/connect-all	Connects all loaded profiles
/connect ProfileID	Connects the profile specified Refer to the advanced walkthrough to find out about where to find the ProfileID
/disconnect ProfileID	Disconnects the profile specified Refer to the advanced walkthrough to find out about where to find the ProfileID
/set ProfileID	Designates which profile to send chat you type to Refer to the advanced walkthrough to find out about where to find the ProfileID
/make-config	Generates a default.xml config file for you to edit.
/reload-profiles	Reloads all profiles from their respective config files.

Asgard3-GUI Commands

/clear	Clears all chat in the chat window
/lines 1-9999999	Sets the max lines to retain in a specific profile.
/profile username	When in a profile connected to battle.net will request the given users battle.net profile.

Universal Commands

Keep in mind that if a command has multiple flags in less other-wise stated the command only requires one of the flags if you have both it will not cause an issue. An example of this is if I have the following

<http://www.mikeownage.com>

flags MO associated with my username and I ask the bot kick a user it will. Universal commands can be used inside the bot by using /command or on battle.net by using the bots trigger.

Command	Flag(s)	Description
/whisper /aw	AM	Toggles if the bot will whisper back all commands or not. Example: /whisper
/reloadplugins /rp	M	Reloads all plugins Example: /reloadplugins
/realmcharacters	M	If connected and logged on to a Diablo 2 realm will list out all realm characters on the bots account. Example: /realmcharacters
/reload	M	Will reload the profiles settings from the config file. Example: /reload
/timestamp	M	Will set the timestamp format Here is an example of how to set the format just like the bot currently uses by default. Do not include the quotes. Example: /timestamp "{0} – "
/createclan	M	Will attempt to create a clan if the profile is connected as WAR3 or W3XP game client. Example: /createclan user1 user2 user3 user4 user5 user6 user7 user8 user9; clantag; clan name
/ver /build /version /verison	MI	Will display the version information for the bot. Example: /ver

Flags

I will cover all the flags currently used by Asgard3 and its official plugins and what they are intended to do. Some flags will only do as intended if the Operator Plugin is loaded.

Flag	Description
A	Administrator
B	Banned
C	Clan commands
D	Restricted Administrator
I	Information
M	Master
O	Operator
S	Safelist
T	Clan Banned (Will ban a War3 User if their clan matches the tag linked to this flag)
X	Designate
Z	Unrestricted Say Command

<http://www.mikeownage.com>

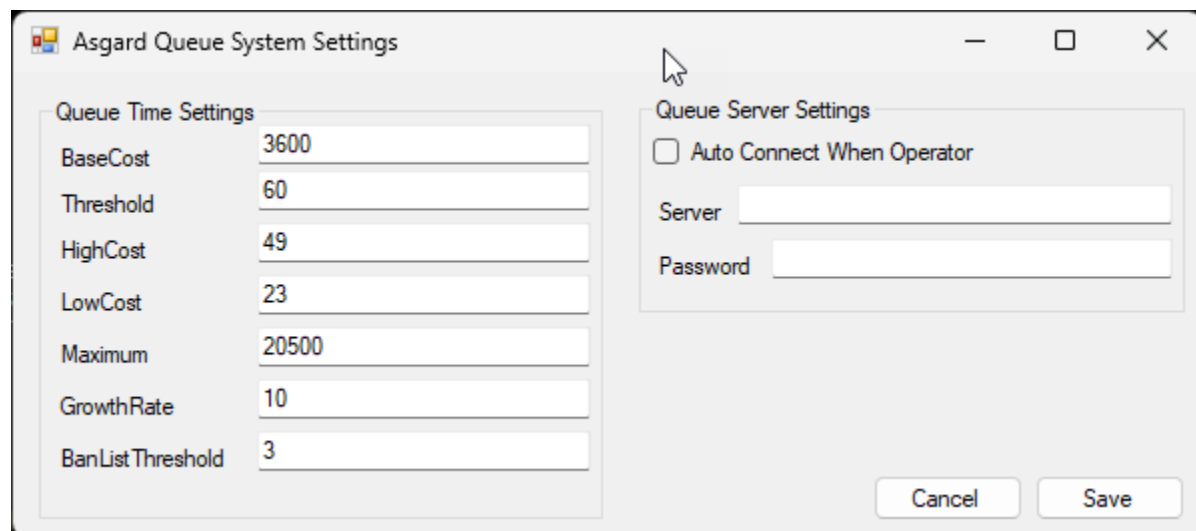
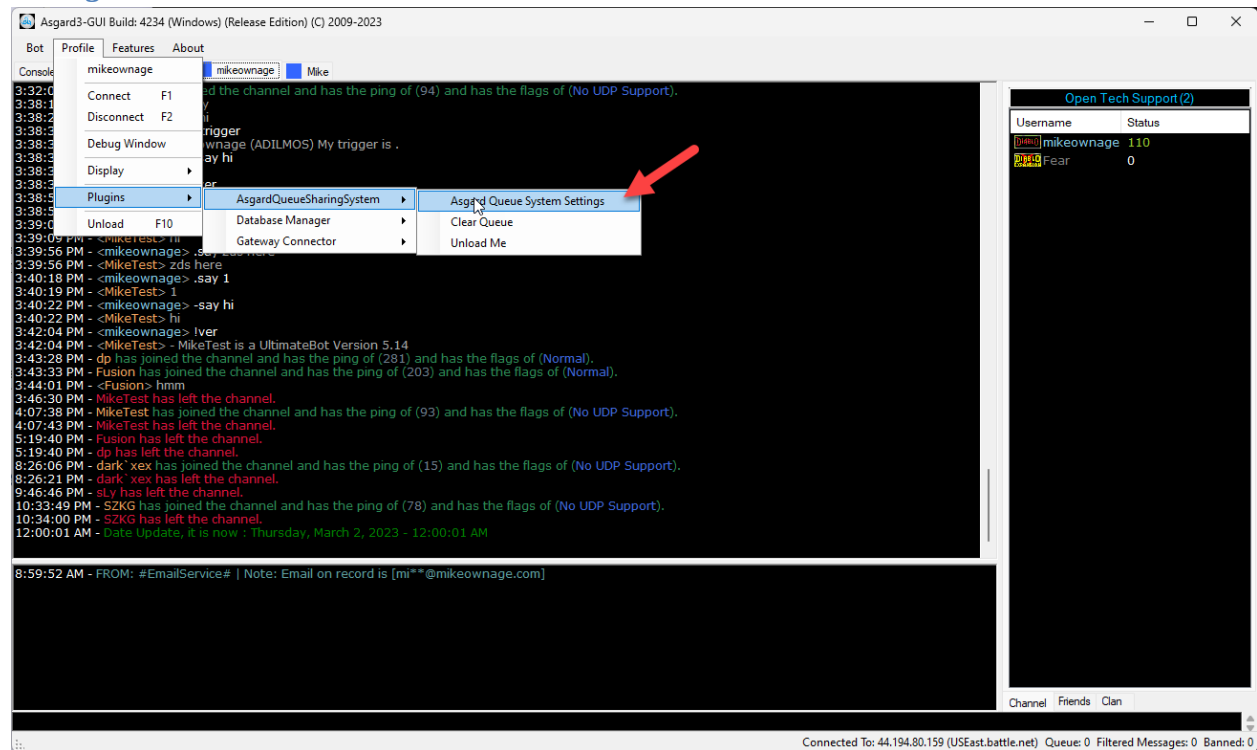
<http://www.mikeownage.com>

Official Plugins

Asgard Queue Sharing Plugin

This plugin provides advanced features such as formatting username when sending whispers, bans and unbans as well as provide a queue so you will not send to many messages and disconnect from battle.net along with adding the ability for other bots supporting the Asgard Queue Sharing Protocol to share queues. If you wish to allow Asgard3 to share queues you will need to run an Asgard Server with the Queue Sharing Plugin which isn't covered by this guide at this time.

Settings



<http://www.mikeownage.com>

Here is a snippet of the current WaitTime function below, I don't recommend adjustment of these settings unless you run into issues.

```
private Int32 WaitTime(int length)
{
    int waitTime = BaseCost;
    if (_banList.Count > BanListThreshold && _packetQueue.Count == 0 && _queueList.Count == 0)
    {
        if (_loadQueue == false) return Maximum + 1000;
    }
    if (length >= Threshold)
    {
        waitTime += (length * HighCost);
        if (_consecutiveSends % 2 == 0) waitTime += 420;
        if (_consecutiveSends % 3 == 0) waitTime += 220;
    }
    else
    {
        waitTime += (length * LowCost);
    }

    if (_consecutiveSends % 3 == 0) waitTime += 1120;

    waitTime += RandomNumber(lowerNumber: 50, higherNumber: 175, seed: length + (int)_consecutiveSends + _credits);

    if (waitTime >= Maximum) waitTime = Maximum;

    if (_credits - waitTime <= 0) _loadQueue = false;

    return waitTime;
}
```

Commands

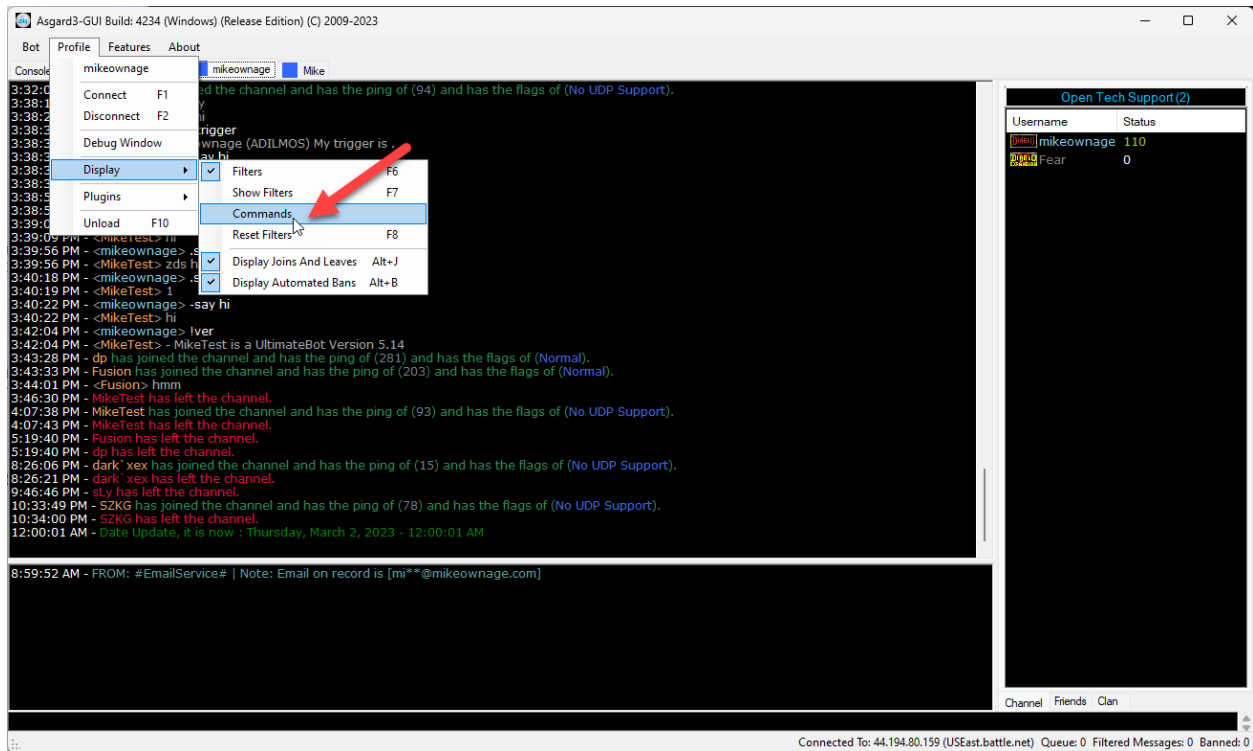
Command	Flags	Information
/cq /clearqueue /clearq	I	Removes all pending messages from the queue. Example: /cq
/queueconnect /qc	AM	Has the bot connect to an Asgard Queue Sharing Server Example: /qc server channelpassword
/queuedisconnect /qd	AM	Has the bot disconnect from the Asgard Queue Sharing Server Example: /qd
/queuemaster /qm	AM	When issued to a bot, the bot will then tell the server to set it as the primary control bot for queue sharing. Example: /qm

Operator Plugin

This plugin provides functions and commands related to management of the bot and channel such as Auto Moderation, Ping Ban, Autoban and Tagbans.

Commands

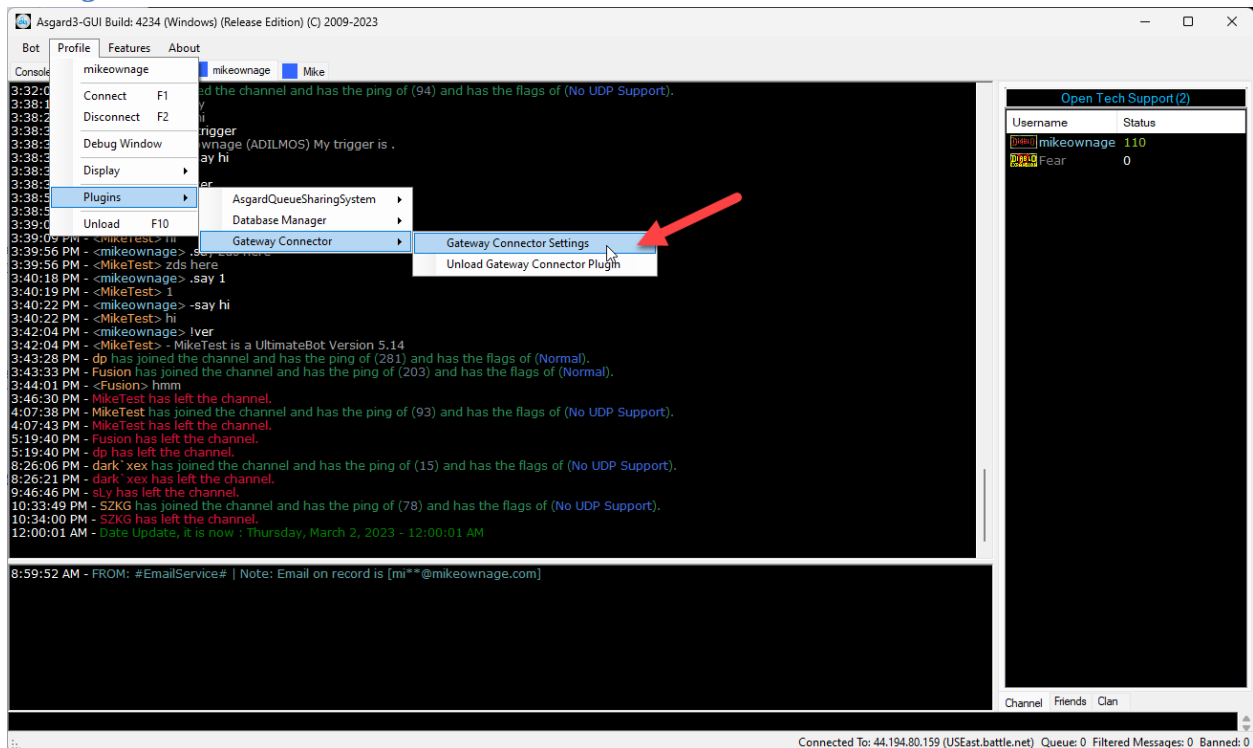
Using the inbuilt command viewer is the new recommended way to view commands from plugins, the plugin must be loaded first.



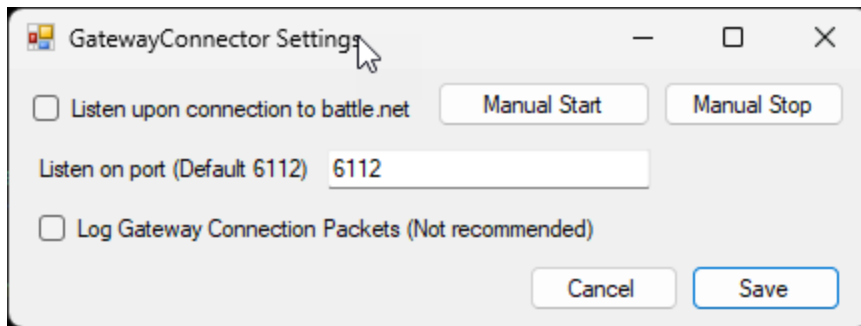
Binary Gateway Plugin

Allows a bot profile to share its current connected profile with older and or obsolete battle.net bots. Such as those that use telnet or do not support the current check revision standards for battle.net.

Settings

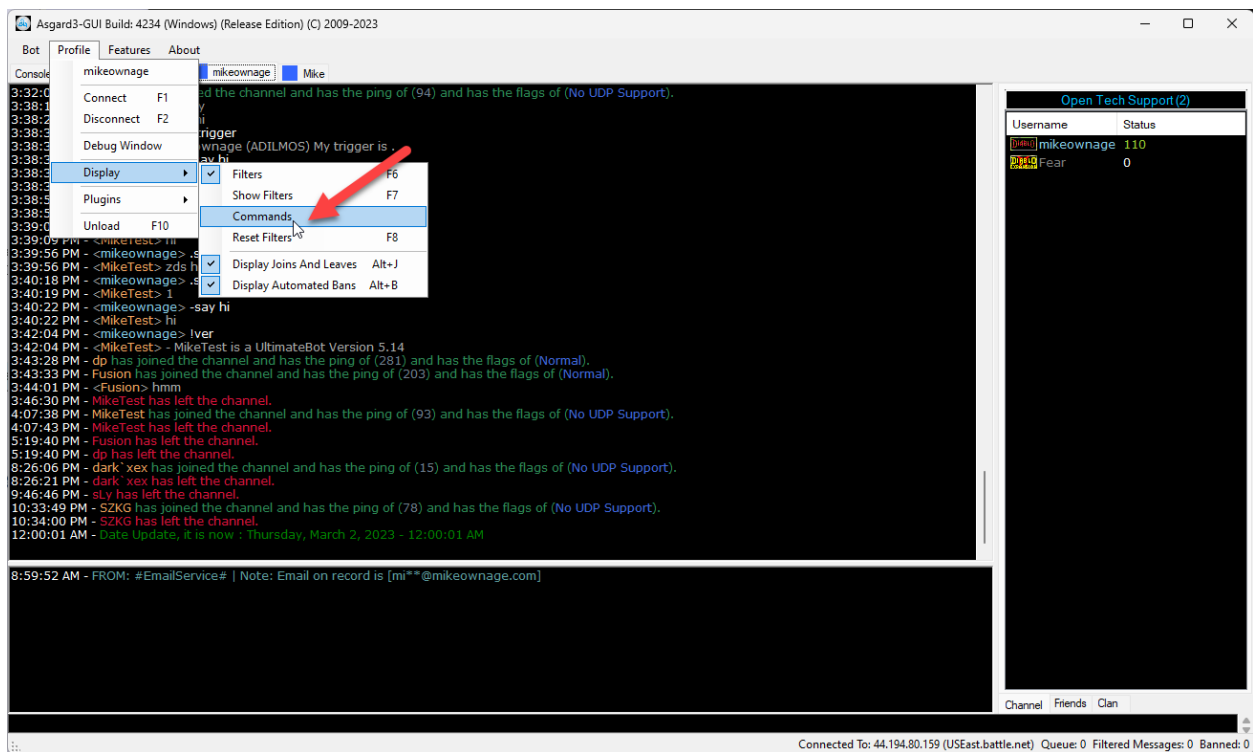


<http://www.mikeownage.com>



Commands

Using the inbuilt command viewer is the new recommended way to view commands from plugins, the plugin must be loaded first.

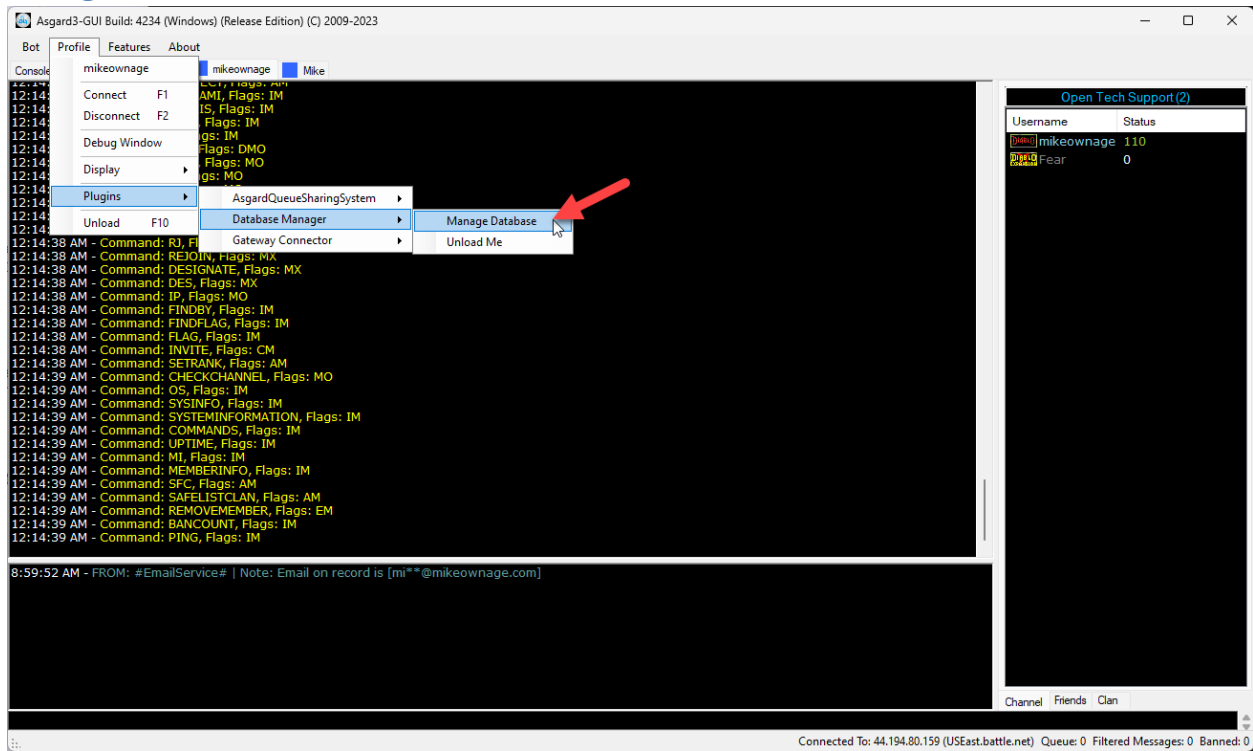


Database Management Plugin

The database management plugin adds the basic commands needed to manage users as well as a GUI for user management.

<http://www.mikeownage.com>

Settings



Commands

Using the inbuilt command viewer is the new recommended way to view commands from plugins, the plugin must be loaded first.

<http://www.mikeownage.com>

DBManager

Database List

MikeTest S
Fusion S
ChatGPTBot S

Edit Remove

User Information

Username:

Flags:

Add or Update

Done